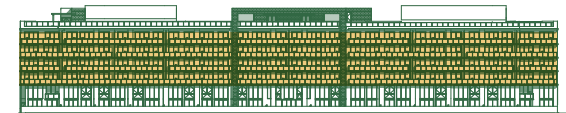
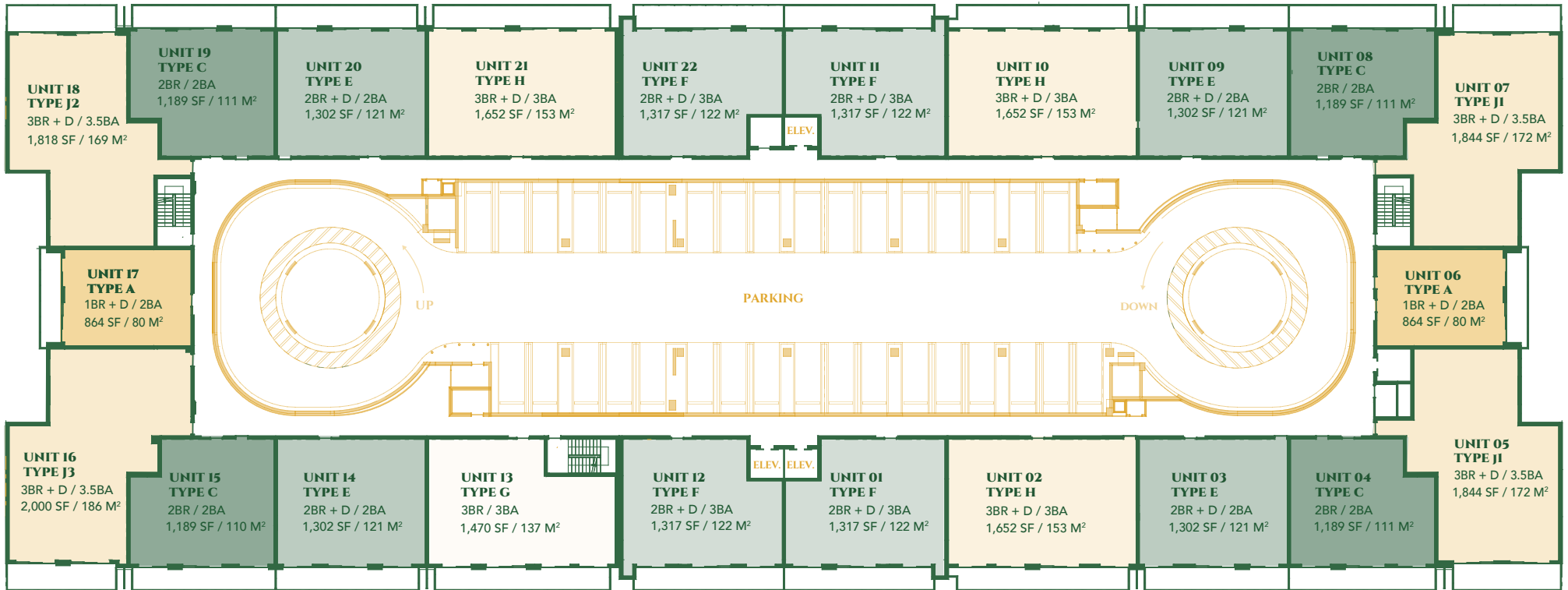


RESIDENCE MIX	1 Bedroom	2
	2 Bedrooms	2
	2 Bedrooms + Office	9
	2 Bedrooms + Den + Office	2
	4 Bedrooms	2



These drawings are conceptual only and are for the convenience of reference. They should not be relied upon as representations, express or implied, of the final detail of the residences. Units shown are examples of unit types and may not depict actual units. Stated square footages are ranges for a particular unit type and are measured to the exterior boundaries of the exterior walls and the centerline of interior demising walls and in fact vary from the area that would be determined by using the description and definition of the unit set forth in the declaration (which generally only includes the interior airspace between the perimeter walls and excludes interior structural components). Note that measurements of rooms set forth on this floorplan are generally taken at the greatest points of each given room (as if the room were a perfect rectangle), without regards for any cutouts. Accordingly, the area of the actual room will typically be smaller than the product obtained by multiplying the stated length times width. All dimensions are approximate and may vary with actual construction, and all floor plans and development plans are subject to change.



## RESIDENCE MIX

1 Bedroom + Den	2
2 Bedrooms	4
2 Bedroom + Den	8
3 Bedrooms	1
3 Bedroom + Den	7



# 2200 BRICKELL

## TYPE A

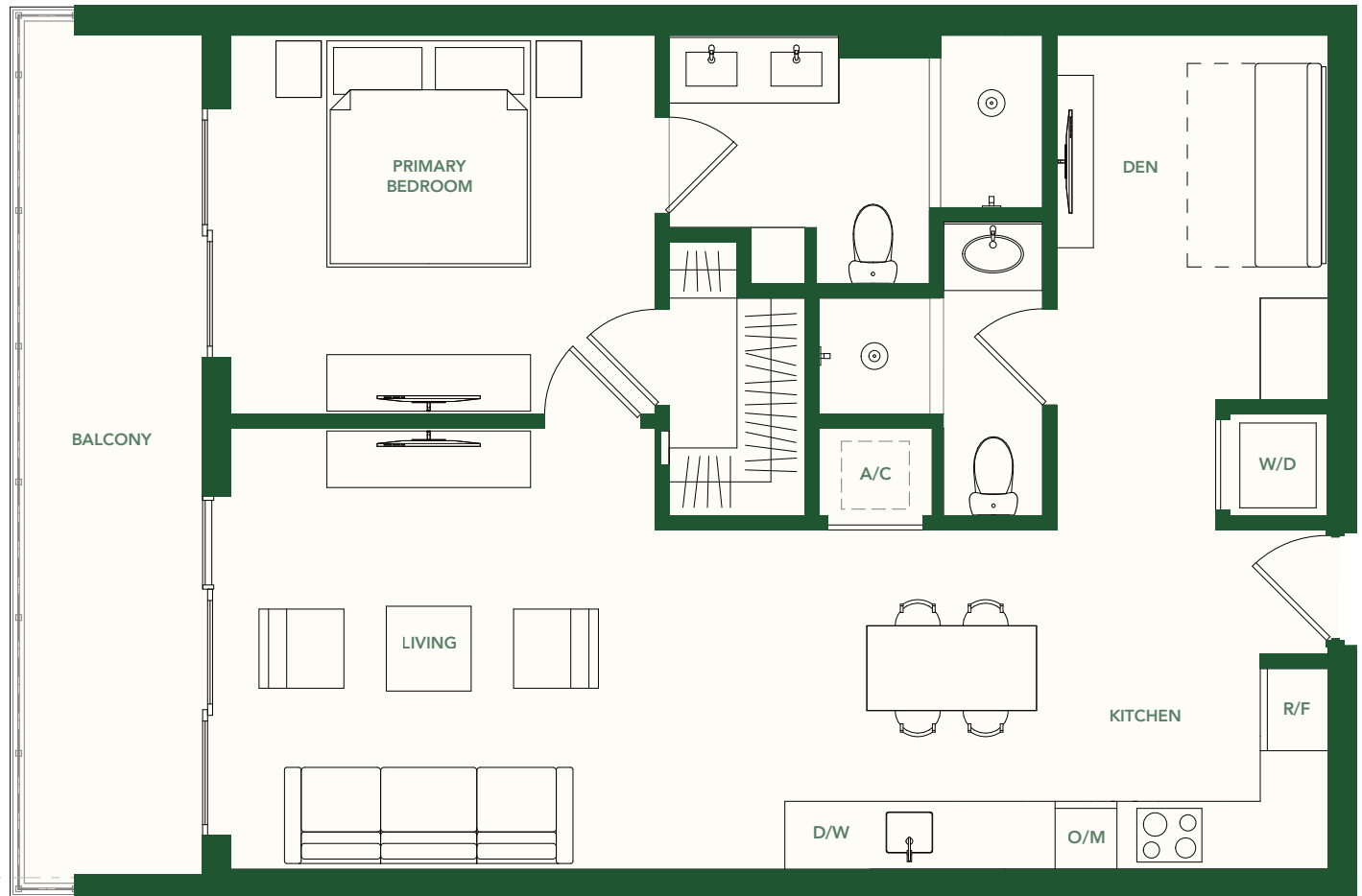
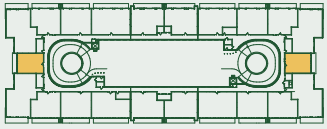
UNITS 06, 17

1 BEDROOM + DEN

2 BATHROOMS

LEVELS 2 - 5

INTERIOR	864 SF / 80 M <sup>2</sup>
BALCONY	124 SF / 12 M <sup>2</sup>
TOTAL	988 SF / 92 M <sup>2</sup>



These drawings are conceptual only and are for the convenience of reference. They should not be relied upon as representations, express or implied, of the final detail of the residences. Units shown are examples of unit types and may not depict actual units. Stated square footages are ranges for a particular unit type and are measured to the exterior boundaries of the exterior walls and the centerline of interior demising walls and in fact vary from the area that would be determined by using the description and definition of the unit set forth in the declaration (which generally only includes the interior airspace between the perimeter walls and excludes interior structural components). Note that measurements of rooms set forth on this floorplan are generally taken at the greatest points of each given room (as if the room were a perfect rectangle), without regards for any cutouts. Accordingly, the area of the actual room will typically be smaller than the product obtained by multiplying the stated length times width. All dimensions are approximate and may vary with actual construction, and all floor plans and development plans are subject to change.

## TYPE B

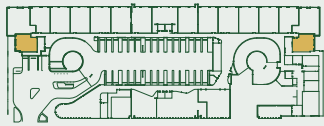
UNITS 101, 117

1 BEDROOM

1 BATHROOM

GROUND LEVEL

INTERIOR	592 SF / 55 M <sup>2</sup>
TERRACE	170 SF / 16 M <sup>2</sup>
TOTAL	762 SF / 71 M <sup>2</sup>



# 2200 BRICKELL

## TYPE C

UNITS 04, 08, 15, 19

2 BEDROOMS

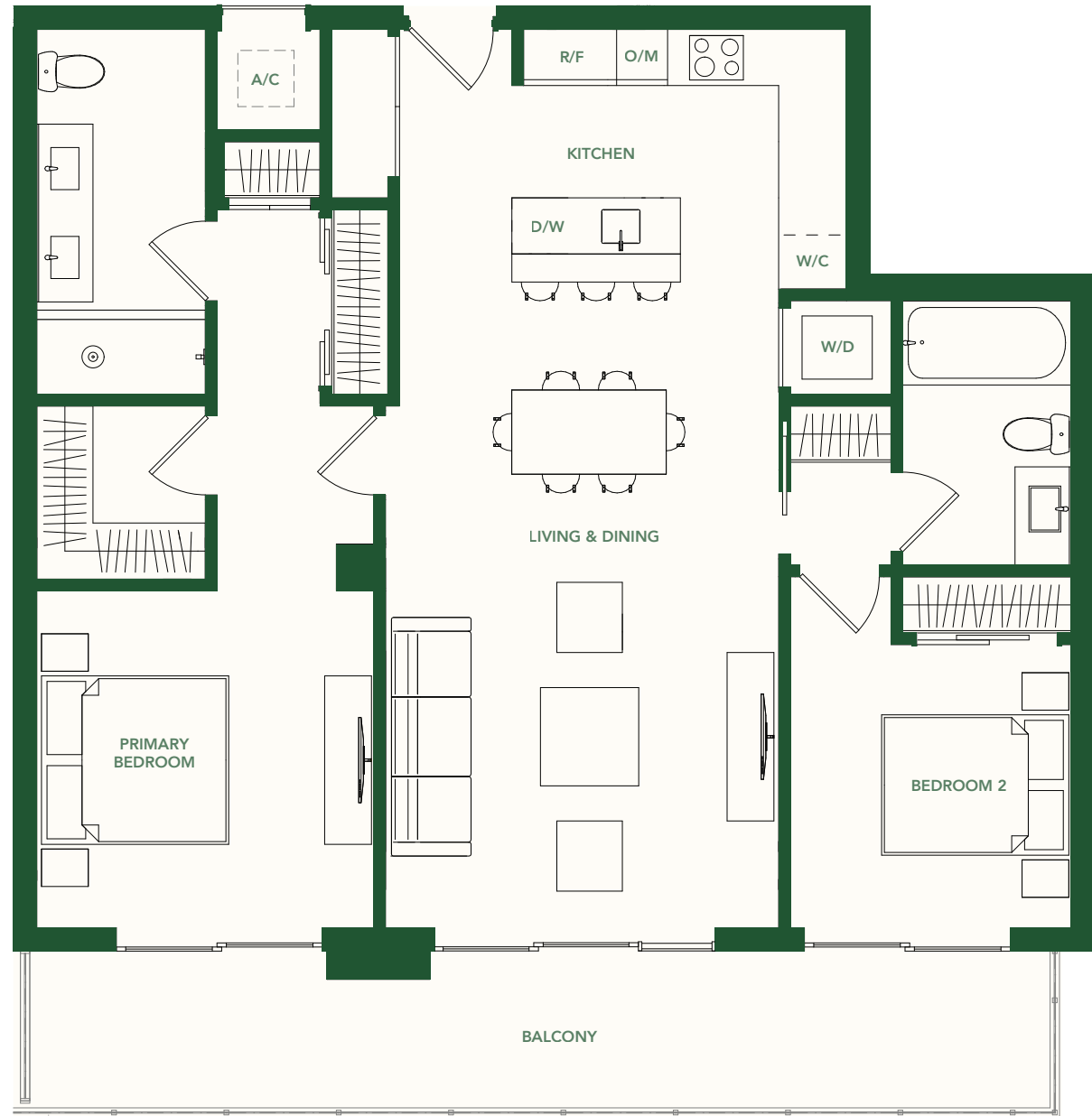
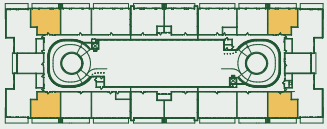
2 BATHROOMS

LEVEL 2 - 5

INTERIOR 1,189 SF / 110 M<sup>2</sup>

BALCONY 215 SF / 20 M<sup>2</sup>

TOTAL 1,404 SF / 130 M<sup>2</sup>



These drawings are conceptual only and are for the convenience of reference. They should not be relied upon as representations, express or implied, of the final detail of the residences. Units shown are examples of unit types and may not depict actual units. Stated square footages are ranges for a particular unit type and are measured to the exterior boundaries of the exterior walls and the centerline of interior demising walls and in fact vary from the area that would be determined by using the description and definition of the unit set forth in the declaration (which generally only includes the interior airspace between the perimeter walls and excludes interior structural components). Note that measurements of rooms set forth on this floorplan are generally taken at the greatest points of each given room (as if the room were a perfect rectangle), without regards for any cutouts. Accordingly, the area of the actual room will typically be smaller than the product obtained by multiplying the stated length times width. All dimensions are approximate and may vary with actual construction, and all floor plans and development plans are subject to change.

2200  
BRICKELL

# TYPE E

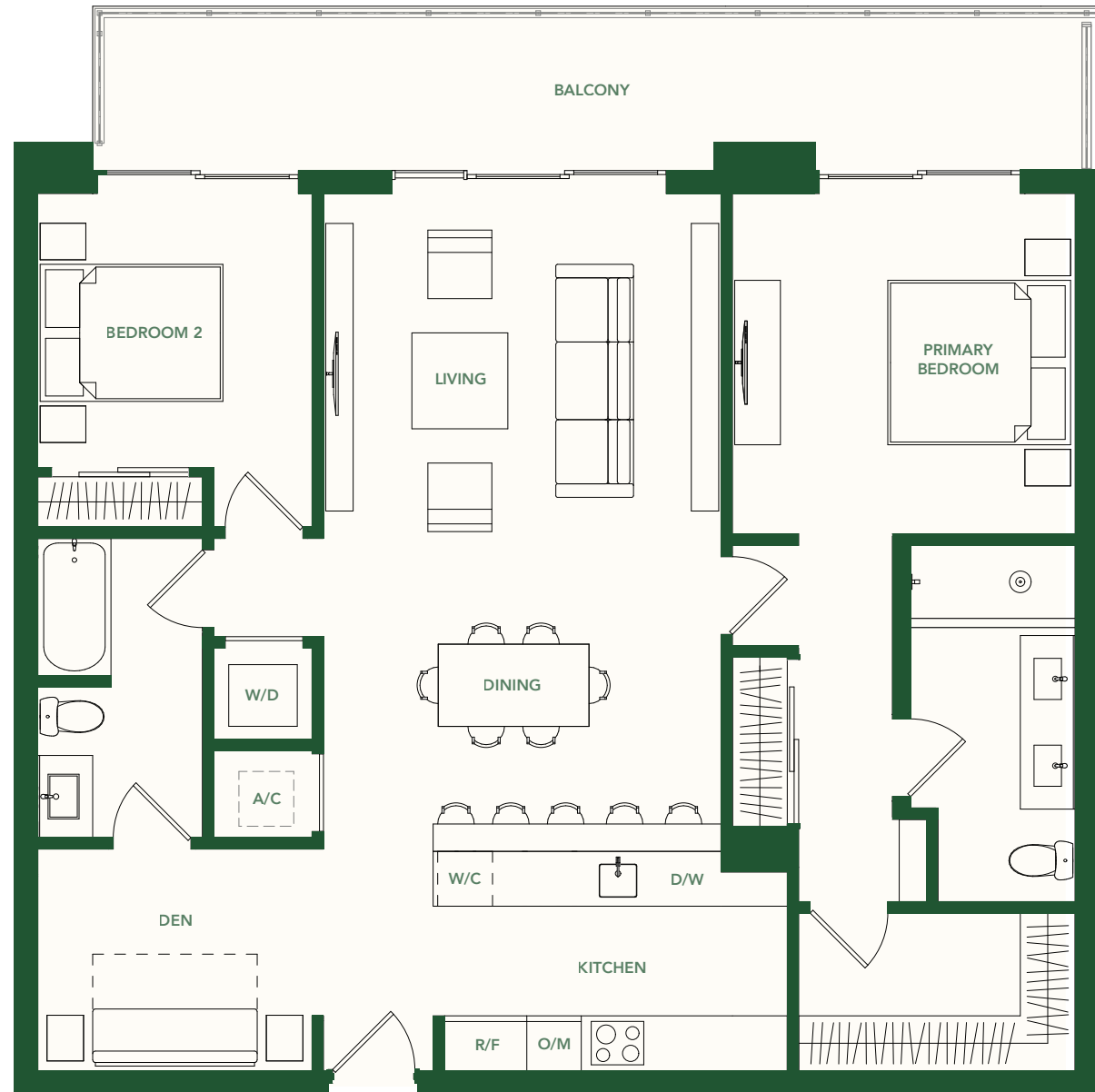
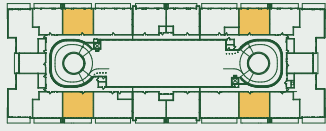
UNITS 03, 09, 14, 20

2 BEDROOMS + DEN

2 BATHROOMS

LEVELS 2 - 5

INTERIOR	1,302 SF / 121 M <sup>2</sup>
BALCONY	213 SF / 20 M <sup>2</sup>
TOTAL	1,515 SF / 141 M <sup>2</sup>



These drawings are conceptual only and are for the convenience of reference. They should not be relied upon as representations, express or implied, of the final detail of the residences. Units shown are examples of unit types and may not depict actual units. Stated square footages are ranges for a particular unit type and are measured to the exterior boundaries of the exterior walls and the centerline of interior demising walls and in fact vary from the area that would be determined by using the description and definition of the unit set forth in the declaration (which generally only includes the interior airspace between the perimeter walls and excludes interior structural components). Note that measurements of rooms set forth on this floorplan are generally taken at the greatest points of each given room (as if the room were a perfect rectangle), without regards for any cutouts. Accordingly, the area of the actual room will typically be smaller than the product obtained by multiplying the stated length times width. All dimensions are approximate and may vary with actual construction, and all floor plans and development plans are subject to change.

2200  
BRICKELL

# TYPE F

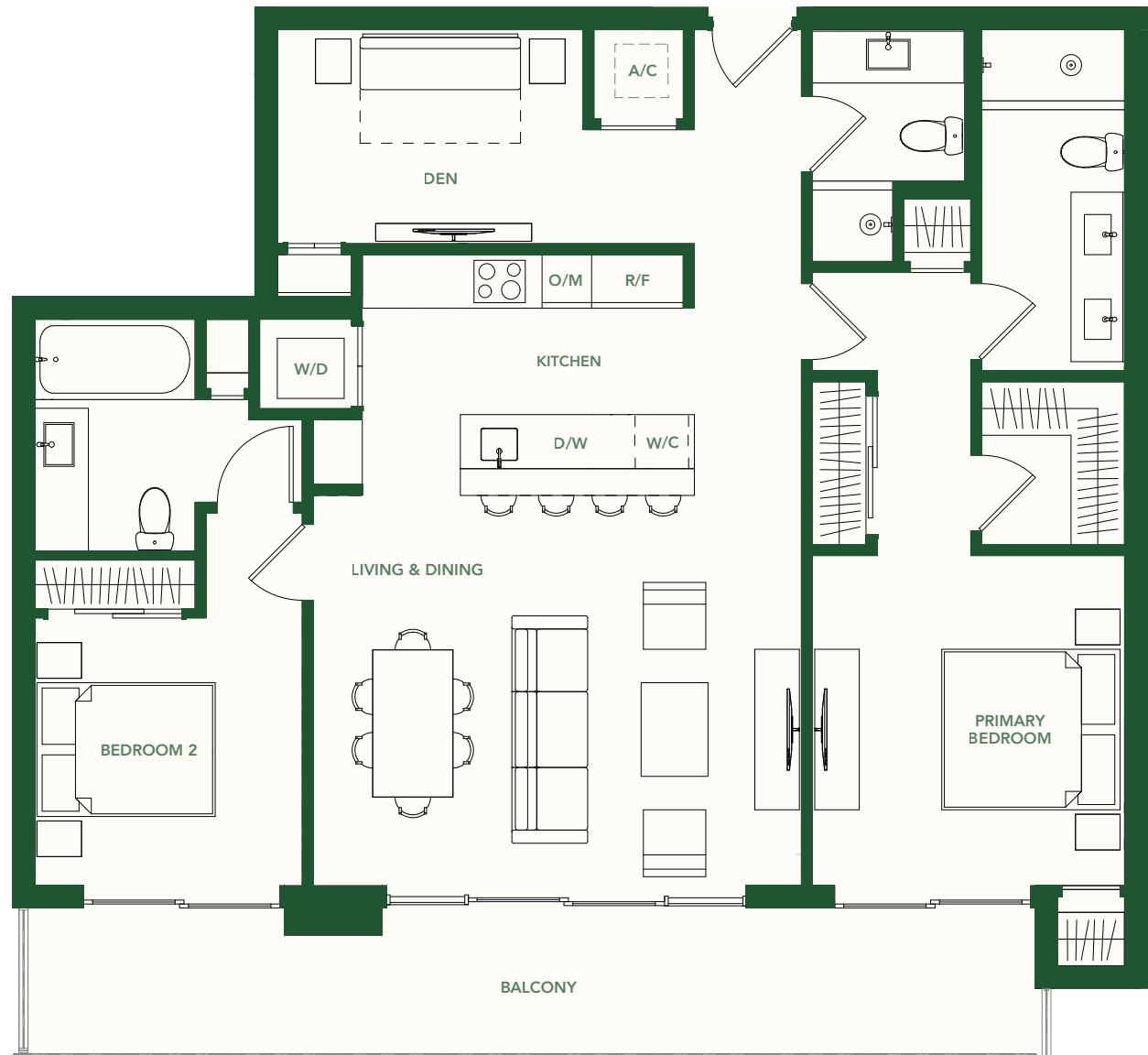
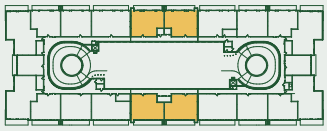
UNITS 01, 11, 12, 22

2 BEDROOMS + DEN

3 BATHROOMS

LEVELS 2 - 5

INTERIOR	1,317 SF / 122 M <sup>2</sup>
BALCONY	210 SF / 20 M <sup>2</sup>
TOTAL	1,527 SF / 142 M <sup>2</sup>



These drawings are conceptual only and are for the convenience of reference. They should not be relied upon as representations, express or implied, of the final detail of the residences. Units shown are examples of unit types and may not depict actual units. Stated square footages are ranges for a particular unit type and are measured to the exterior boundaries of the exterior walls and the centerline of interior demising walls and in fact vary from the area that would be determined by using the description and definition of the unit set forth in the declaration (which generally only includes the interior airspace between the perimeter walls and excludes interior structural components). Note that measurements of rooms set forth on this floorplan are generally taken at the greatest points of each given room (as if the room were a perfect rectangle), without regards for any cutouts. Accordingly, the area of the actual room will typically be smaller than the product obtained by multiplying the stated length times width. All dimensions are approximate and may vary with actual construction, and all floor plans and development plans are subject to change.

# 2200 BRICKELL

## TYPE G

UNIT 13

3 BEDROOMS

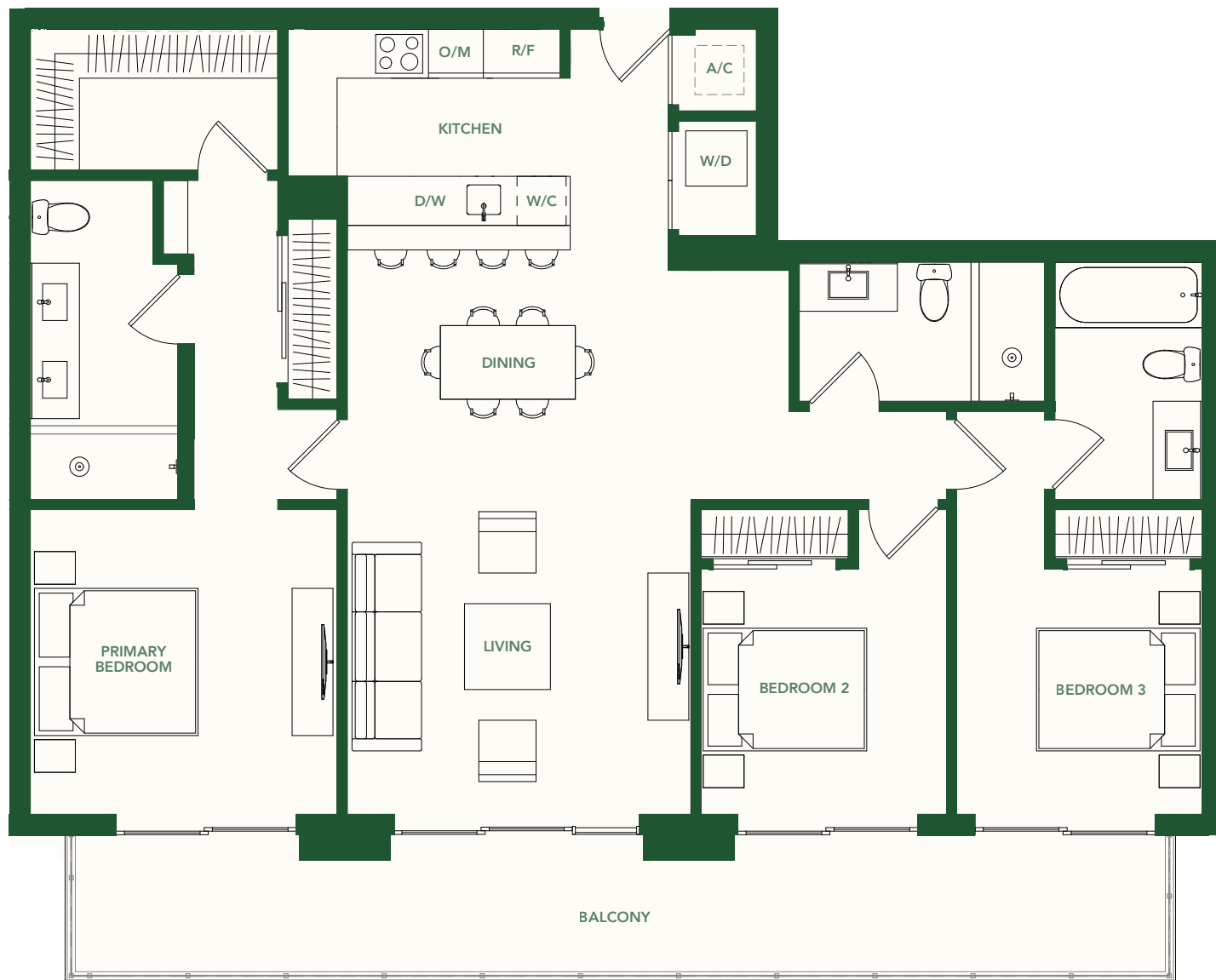
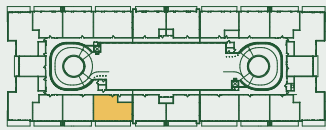
3 BATHROOMS

LEVELS 2 - 5

INTERIOR 1,470 SF / 137 M<sup>2</sup>

BALCONY 256 SF / 24 M<sup>2</sup>

TOTAL 1,726 SF / 161 M<sup>2</sup>



These drawings are conceptual only and are for the convenience of reference. They should not be relied upon as representations, express or implied, of the final detail of the residences. Units shown are examples of unit types and may not depict actual units. Stated square footages are ranges for a particular unit type and are measured to the exterior boundaries of the exterior walls and the centerline of interior demising walls and in fact vary from the area that would be determined by using the description and definition of the unit set forth in the declaration (which generally only includes the interior airspace between the perimeter walls and excludes interior structural components). Note that measurements of rooms set forth on this floorplan are generally taken at the greatest points of each given room (as if the room were a perfect rectangle), without regards for any cutouts. Accordingly, the area of the actual room will typically be smaller than the product obtained by multiplying the stated length times width. All dimensions are approximate and may vary with actual construction, and all floor plans and development plans are subject to change.



## TYPE H

UNITS 02, 10, 21

3 BEDROOMS + DEN

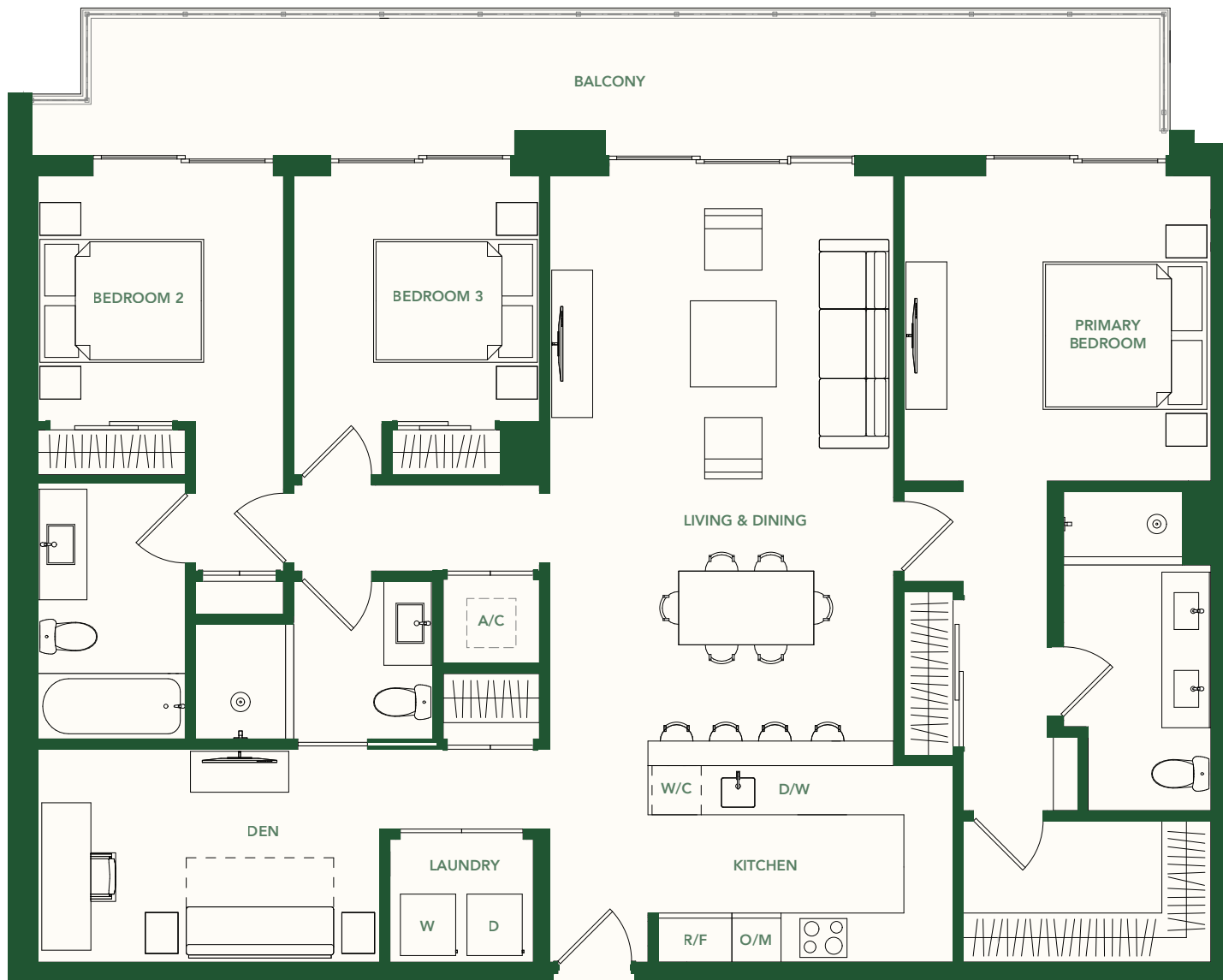
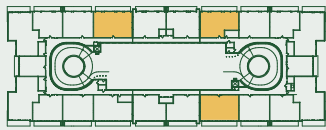
3 BATHROOMS

LEVELS 2 - 5

INTERIOR 1,652 SF / 152 M<sup>2</sup>

BALCONY 259 SF / 24 M<sup>2</sup>

TOTAL 1,911 SF / 177 M<sup>2</sup>



# 2200 BRICKELL

## TYPE J

UNITS 05, 07, 18

3 BEDROOMS + DEN

3.5 BATHROOMS

LEVELS 3 - 5

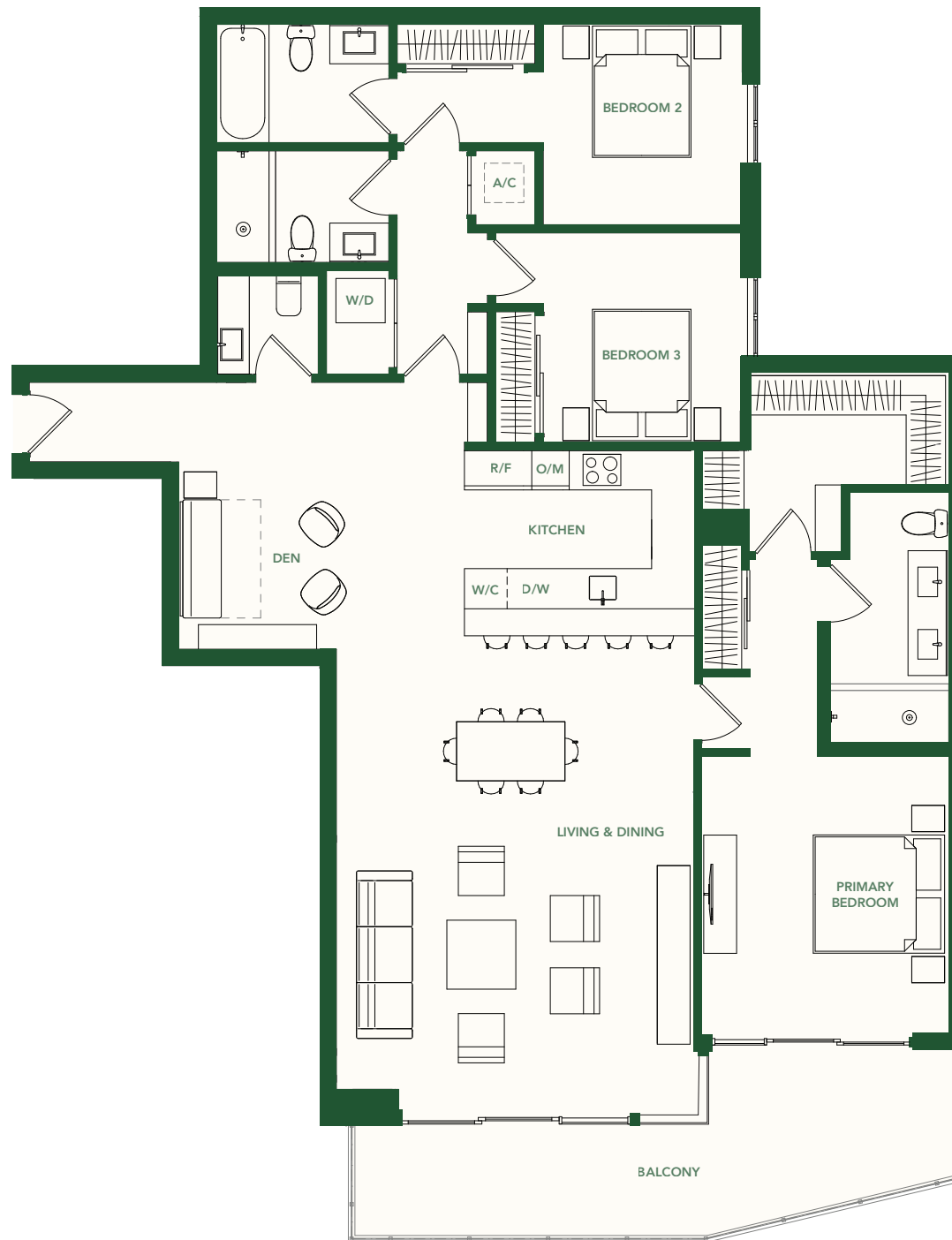
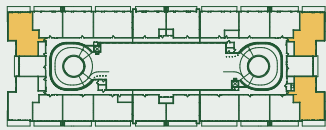
**INTERIOR** 1,818 SF / 169 M<sup>2</sup>

**BALCONY** 205 SF / 19 M<sup>2</sup>

**TOTAL** 2,023 SF / 188 M<sup>2</sup>

UNITS 05, 07 - 1844 SF / 171 M<sup>2</sup>

UNIT 18 - 1818 SF / 169 M<sup>2</sup>



These drawings are conceptual only and are for the convenience of reference. They should not be relied upon as representations, express or implied, of the final detail of the residences. Units shown are examples of unit types and may not depict actual units. Stated square footages are ranges for a particular unit type and are measured to the exterior boundaries of the exterior walls and the centerline of interior demising walls and in fact vary from the area that would be determined by using the description and definition of the unit set forth in the declaration (which generally only includes the interior airspace between the perimeter walls and excludes interior structural components). Note that measurements of rooms set forth on this floorplan are generally taken at the greatest points of each given room (as if the room were a perfect rectangle), without regards for any cutouts. Accordingly, the area of the actual room will typically be smaller than the product obtained by multiplying the stated length times width. All dimensions are approximate and may vary with actual construction, and all floor plans and development plans are subject to change.

2200  
BRICKELL

# TYPE J 1.1

UNIT 205

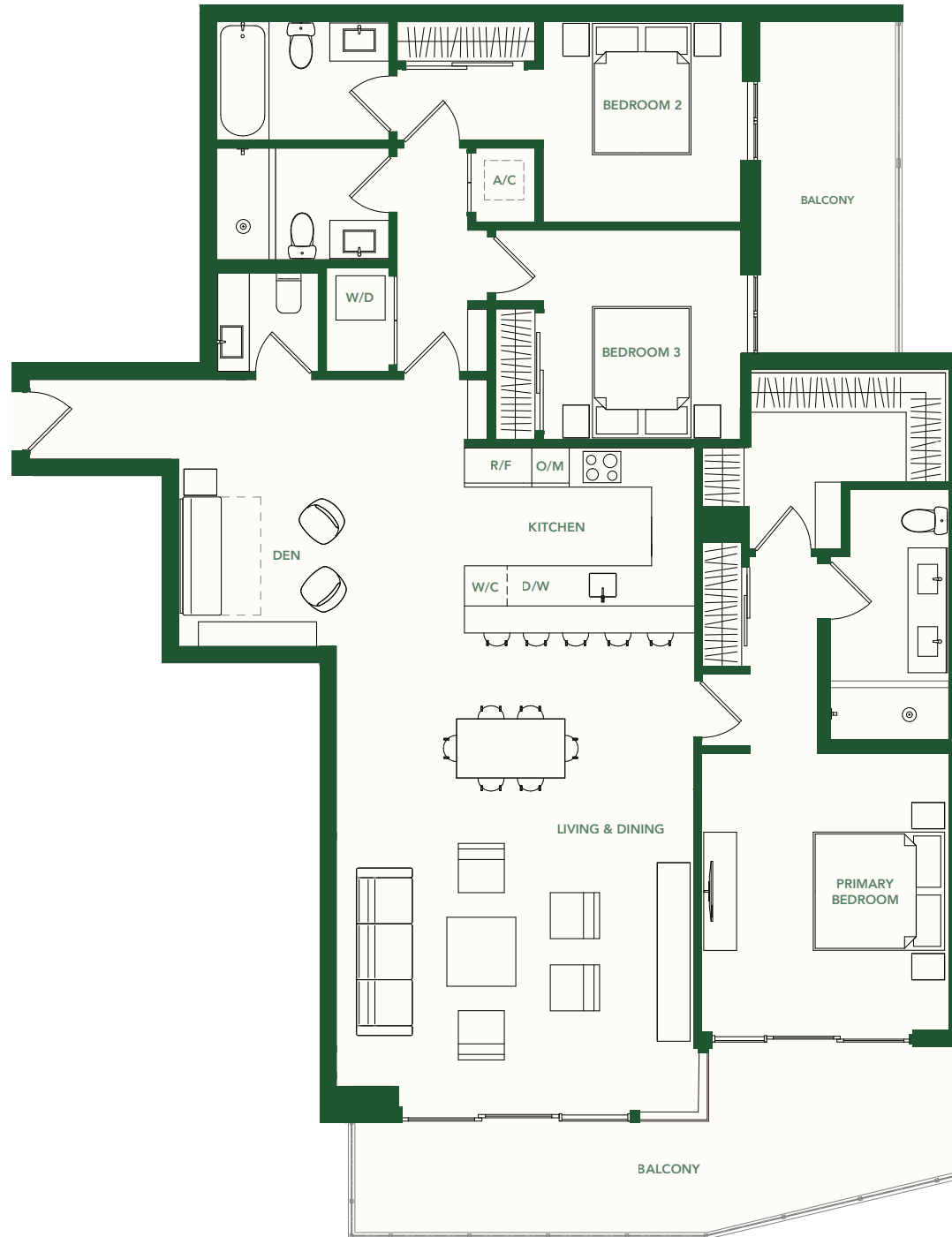
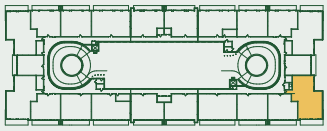
3 BEDROOMS + DEN

3.5 BATHROOMS

**INTERIOR** 1,818 SF / 169 M<sup>2</sup>

**BALCONY** 308 SF / 29 M<sup>2</sup>

**TOTAL** 2,126 SF / 198 M<sup>2</sup>



These drawings are conceptual only and are for the convenience of reference. They should not be relied upon as representations, express or implied, of the final detail of the residences. Units shown are examples of unit types and may not depict actual units. Stated square footages are ranges for a particular unit type and are measured to the exterior boundaries of the exterior walls and the centerline of interior demising walls and in fact vary from the area that would be determined by using the description and definition of the unit set forth in the declaration (which generally only includes the interior airspace between the perimeter walls and excludes interior structural components). Note that measurements of rooms set forth on this floorplan are generally taken at the greatest points of each given room (as if the room were a perfect rectangle), without regard for any cutouts. Accordingly, the area of the actual room will typically be smaller than the product obtained by multiplying the stated length times width. All dimensions are approximate and may vary with actual construction, and all floor plans and development plans are subject to change.

# 2200 BRICKELL

## TYPE J3

UNIT 16

3 BEDROOMS + DEN

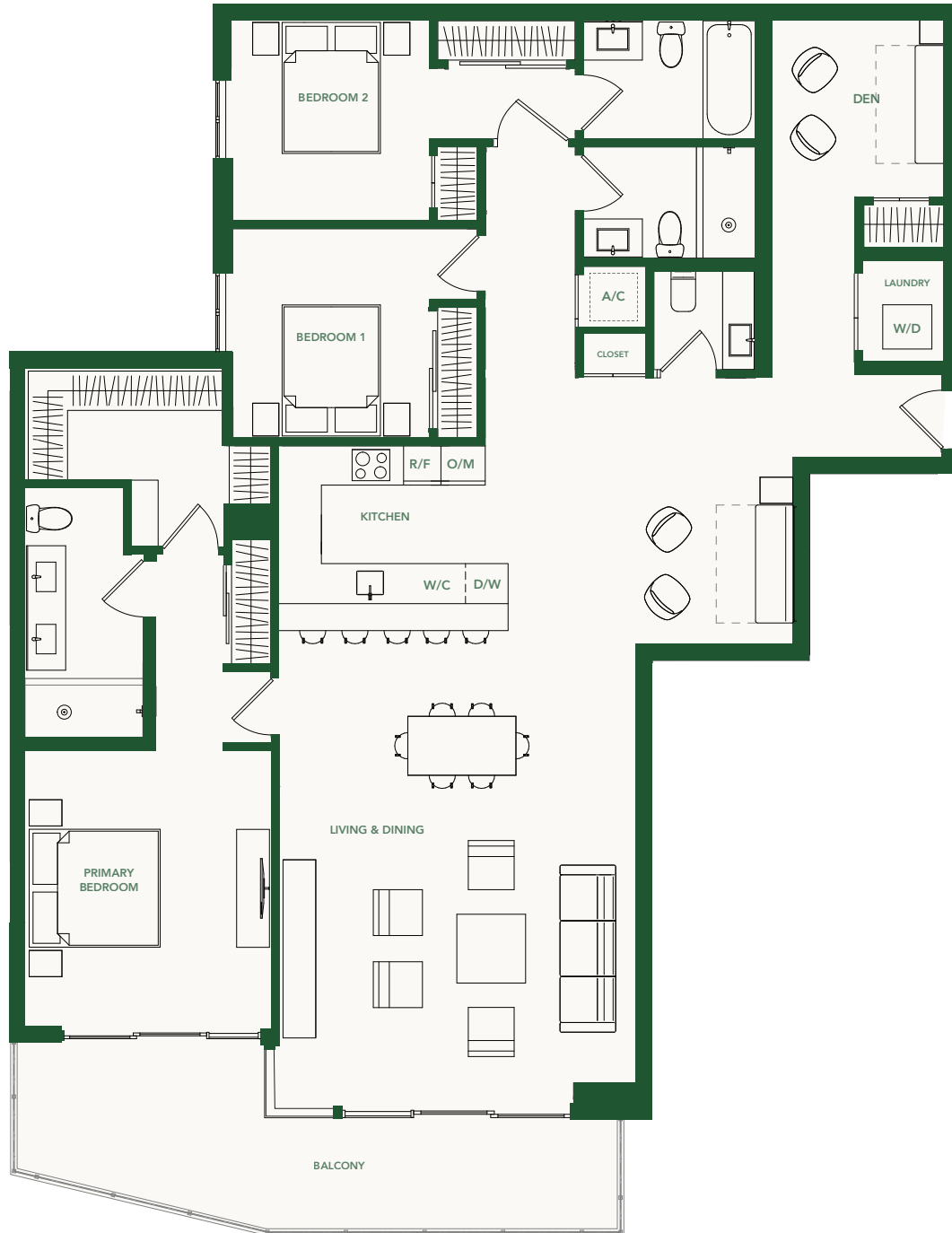
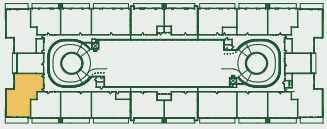
3.5 BATHROOMS

LEVELS 3 - 5

INTERIOR 2,000 SF / 186 M<sup>2</sup>

BALCONY 182 SF / 17 M<sup>2</sup>

TOTAL 2,182 SF / 203 M<sup>2</sup>



These drawings are conceptual only and are for the convenience of reference. They should not be relied upon as representations, express or implied, of the final detail of the residences. Units shown are examples of unit types and may not depict actual units. Stated square footages are ranges for a particular unit type and are measured to the exterior boundaries of the exterior walls and the centerline of interior demising walls and in fact vary from the area that would be determined by using the description and definition of the unit set forth in the declaration (which generally only includes the interior airspace between the perimeter walls and excludes interior structural components). Note that measurements of rooms set forth on this floorplan are generally taken at the greatest points of each given room (as if the room were a perfect rectangle), without regard for any cutouts. Accordingly, the area of the actual room will typically be smaller than the product obtained by multiplying the stated length times width. All dimensions are approximate and may vary with actual construction, and all floor plans and development plans are subject to change.

# 2200 BRICKELL

## TYPE J3.1

UNIT 16

3 BEDROOMS + DEN

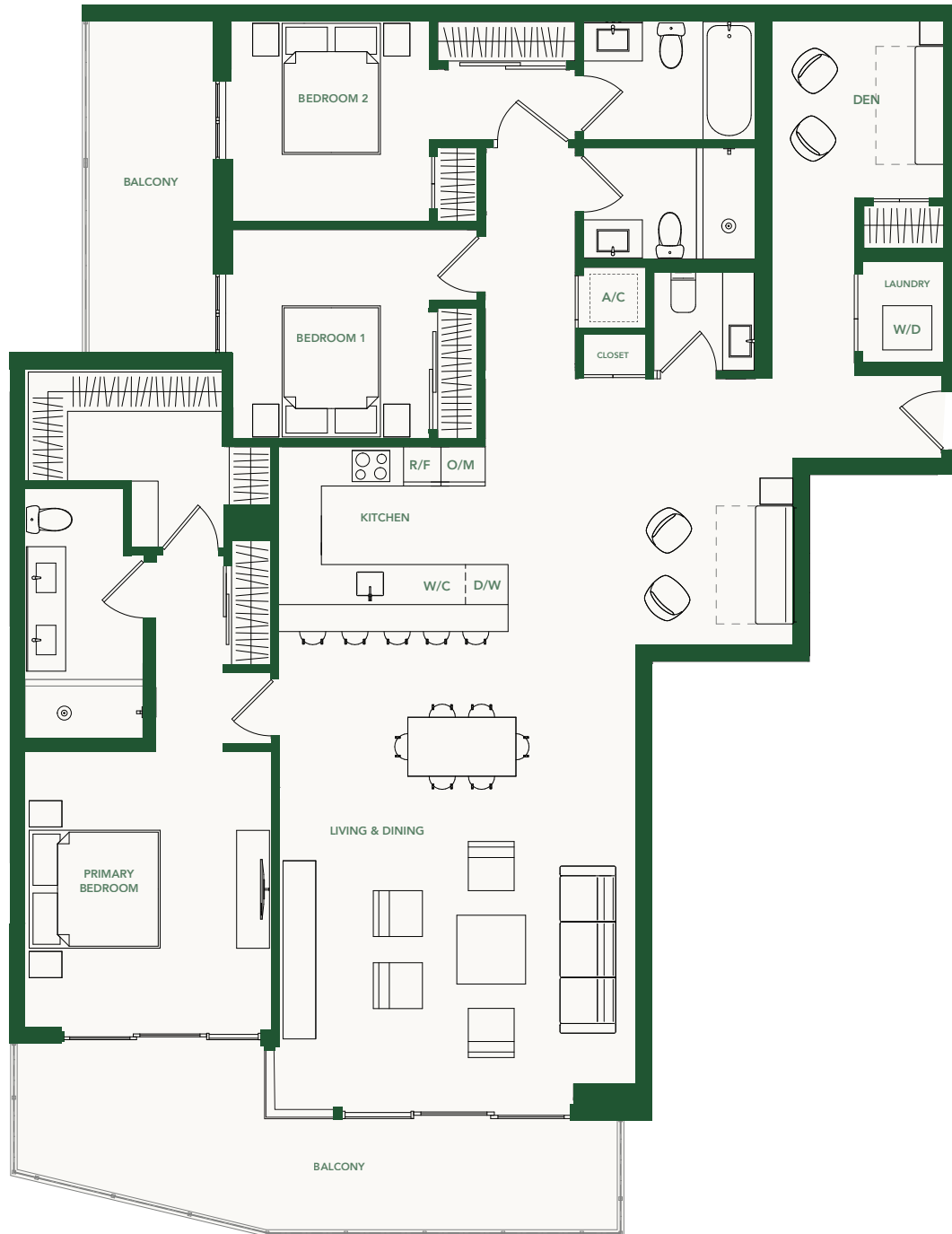
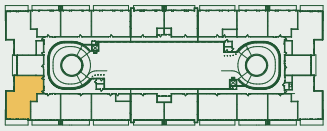
3.5 BATHROOMS

LEVEL 2

**INTERIOR** 2,000 SF / 186 M<sup>2</sup>

**BALCONY** 307 SF / 29 M<sup>2</sup>

**TOTAL** 2,307 SF / 215 M<sup>2</sup>



These drawings are conceptual only and are for the convenience of reference. They should not be relied upon as representations, express or implied, of the final detail of the residences. Units shown are examples of unit types and may not depict actual units. Stated square footages are ranges for a particular unit type and are measured to the exterior boundaries of the exterior walls and the centerline of interior demising walls and in fact vary from the area that would be determined by using the description and definition of the unit set forth in the declaration (which generally only includes the interior airspace between the perimeter walls and excludes interior structural components). Note that measurements of rooms set forth on this floorplan are generally taken at the greatest points of each given room (as if the room were a perfect rectangle), without regard for any cutouts. Accordingly, the area of the actual room will typically be smaller than the product obtained by multiplying the stated length times width. All dimensions are approximate and may vary with actual construction, and all floor plans and development plans are subject to change.

2200  
BRICKELL

# TYPE K

GARDEN VILLAS 103, 115

2 BEDROOMS

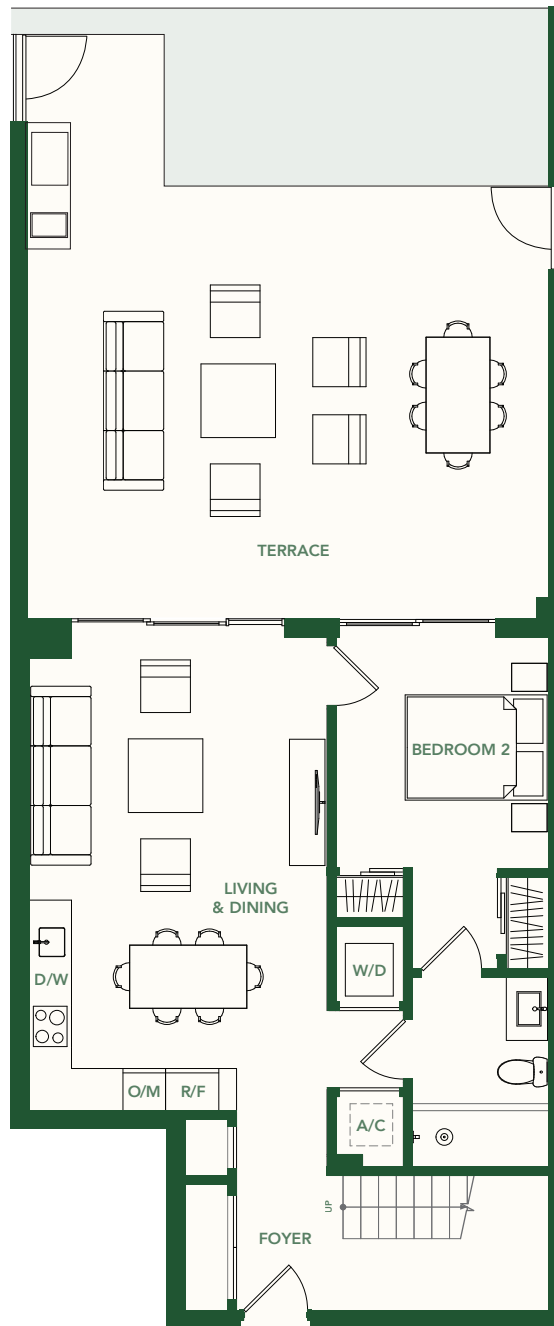
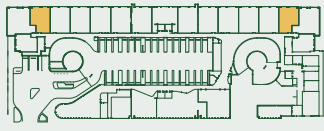
2 BATHROOMS

GROUND LEVEL

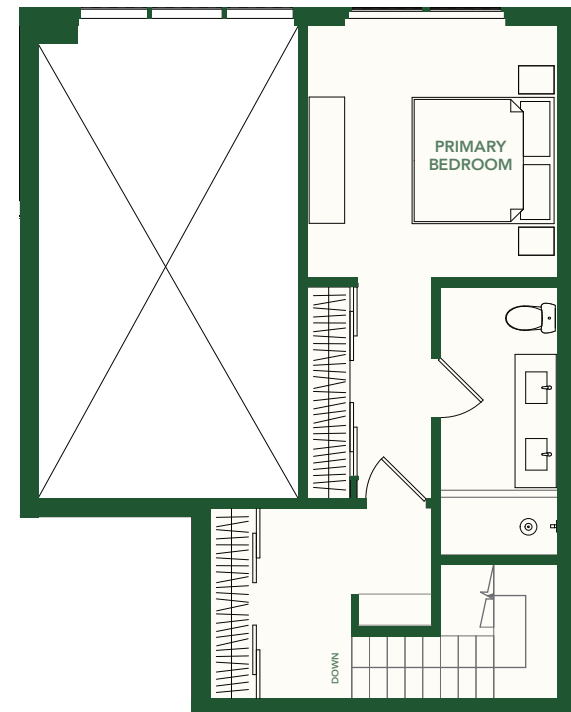
INTERIOR 1,233 SF / 115 M<sup>2</sup>

TERRACE 715 SF / 66 M<sup>2</sup>

TOTAL 1,948 SF / 181 M<sup>2</sup>



**GROUND LEVEL**  
Interior - 762 SF / 71 M<sup>2</sup>



**SECOND LEVEL**  
Interior - 471 SF / 44 M<sup>2</sup>



These drawings are conceptual only and are for the convenience of reference. They should not be relied upon as representations, express or implied, of the final detail of the residences. Units shown are examples of unit types and may not depict actual units. Stated square footages are ranges for a particular unit type and are measured to the exterior boundaries of the exterior walls and the centerline of interior demising walls and in fact vary from the area that would be determined by using the description and definition of the unit set forth in the declaration (which generally only includes the interior airspace between the perimeter walls and excludes interior structural components). Note that measurements of rooms set forth on this floorplan are generally taken at the greatest points of each given room (as if the room were a perfect rectangle), without regard for any cutouts. Accordingly, the area of the actual room will typically be smaller than the product obtained by multiplying the stated length times width. All dimensions are approximate and may vary with actual construction, and all floor plans and development plans are subject to change.

# 2200 BRICKELL

## TYPE L1/L8

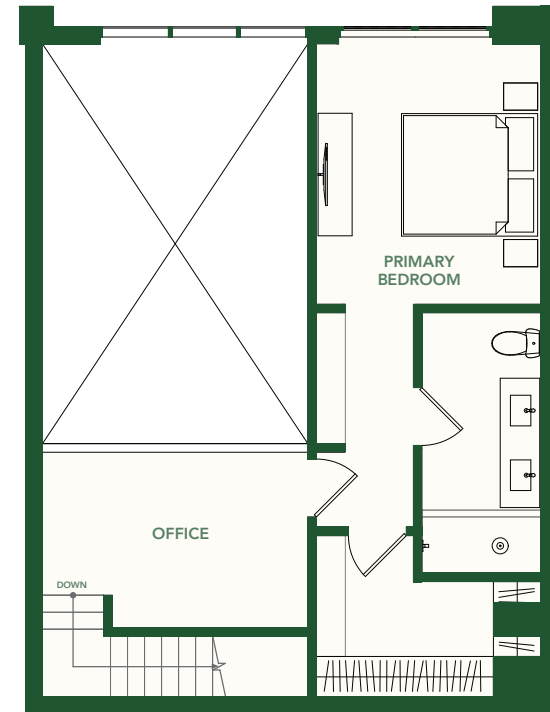
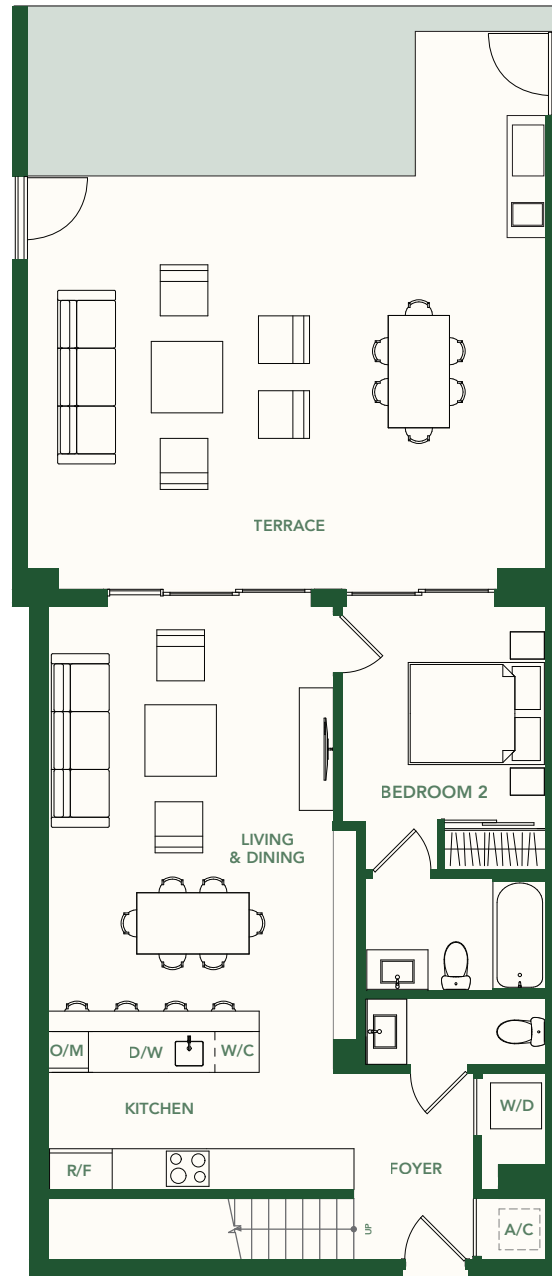
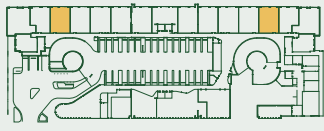
GARDEN VILLAS 104, 114

2 BEDROOMS + OFFICE

2.5 BATHROOMS

GROUND LEVEL

<b>INTERIOR</b>	1,426 SF / 133 M <sup>2</sup>
<b>TERRACE</b>	741 SF / 69 M <sup>2</sup>
<b>TOTAL</b>	2,167 SF / 201 M <sup>2</sup>



These drawings are conceptual only and are for the convenience of reference. They should not be relied upon as representations, express or implied, of the final detail of the residences. Units shown are examples of unit types and may not depict actual units. Stated square footages are ranges for a particular unit type and are measured to the exterior boundaries of the exterior walls and the centerline of interior demising walls and in fact vary from the area that would be determined by using the description and definition of the unit set forth in the declaration (which generally only includes the interior airspace between the perimeter walls and excludes interior structural components). Note that measurements of rooms set forth on this floorplan are generally taken at the greatest points of each given room (as if the room were a perfect rectangle), without regards for any cutouts. Accordingly, the area of the actual room will typically be smaller than the product obtained by multiplying the stated length times width. All dimensions are approximate and may vary with actual construction, and all floor plans and development plans are subject to change.

## TYPE L2/L7

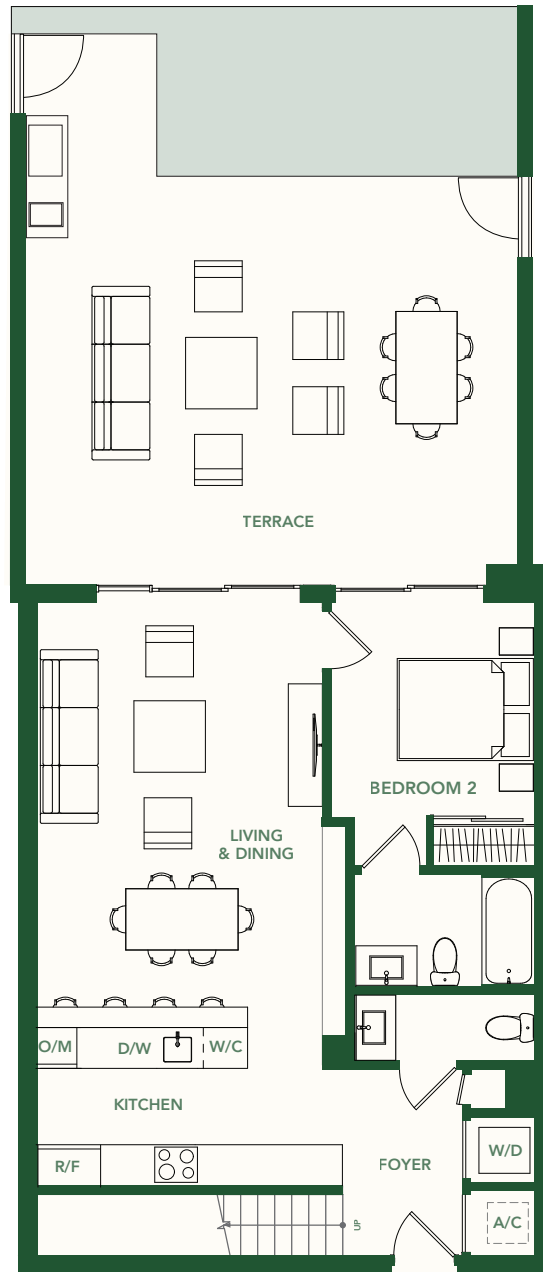
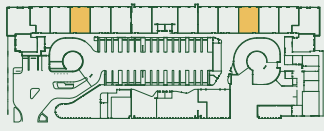
GARDEN VILLAS 105, 113

2 BEDROOMS + OFFICE

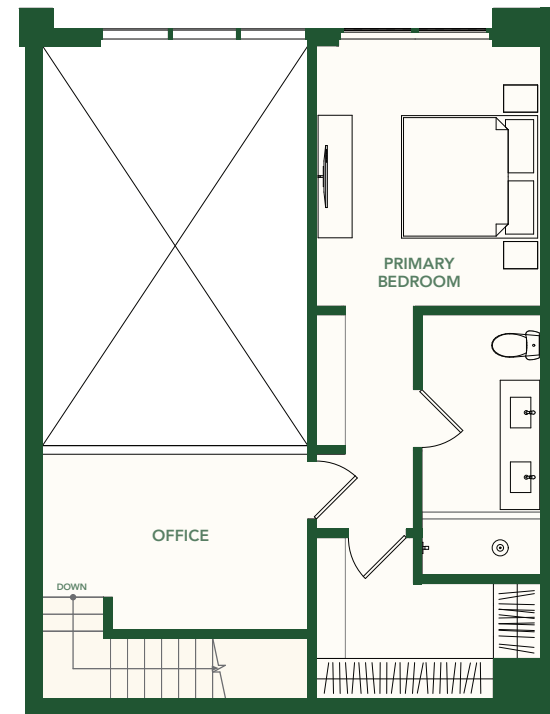
2.5 BATHROOMS

GROUND LEVEL

<b>INTERIOR</b>	1,426 SF / 133 M <sup>2</sup>
<b>TERRACE</b>	702 SF / 65 M <sup>2</sup>
<b>TOTAL</b>	2,128 SF / 198 M <sup>2</sup>



**GROUND LEVEL**  
Interior - 850 SF / 79 M<sup>2</sup>



**SECOND LEVEL**  
Interior - 576 SF / 54 M<sup>2</sup>





# 2200 BRICKELL

## TYPE L3/L6

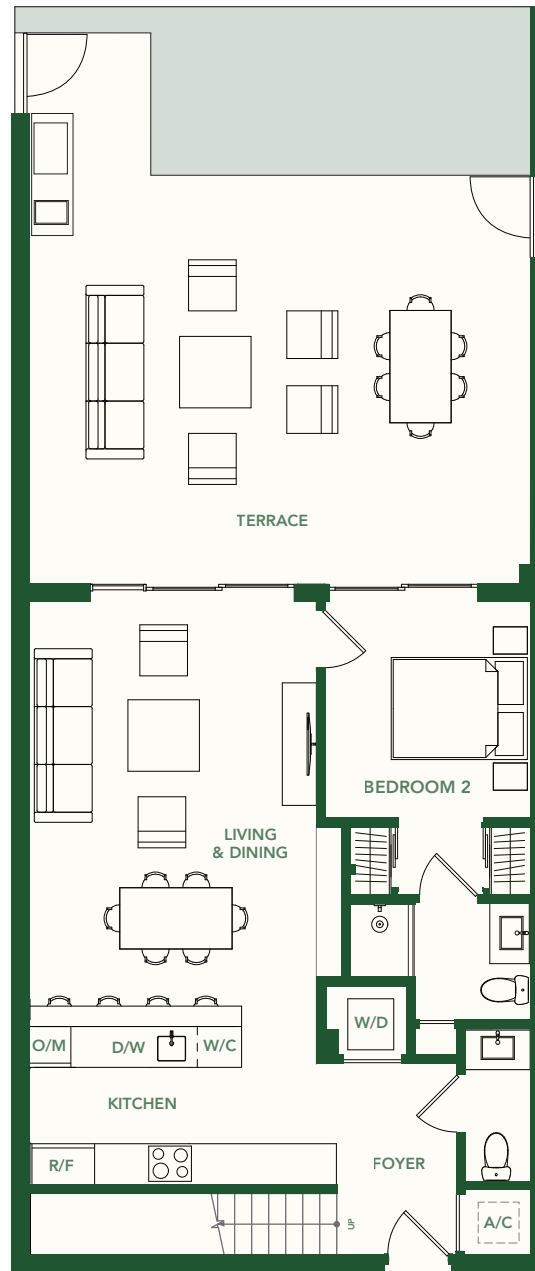
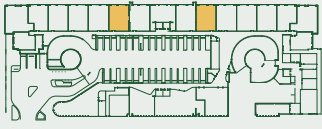
GARDEN VILLAS 107, 111

2 BEDROOMS + OFFICE

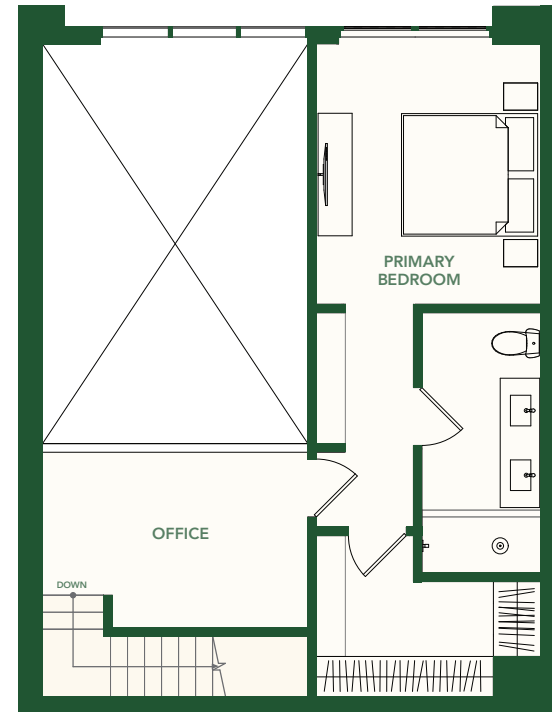
2.5 BATHROOMS

GROUND LEVEL

INTERIOR	1,434 SF / 133 M <sup>2</sup>
TERRACE	720 SF / 69 M <sup>2</sup>
TOTAL	2,154 SF / 200 M <sup>2</sup>



**GROUND LEVEL**  
Interior - 850 SF / 79 M<sup>2</sup>



**SECOND LEVEL**  
Interior - 576 SF / 54 M<sup>2</sup>



These drawings are conceptual only and are for the convenience of reference. They should not be relied upon as representations, express or implied, of the final detail of the residences. Units shown are examples of unit types and may not depict actual units. Stated square footages are ranges for a particular unit type and are measured to the exterior boundaries of the exterior walls and the centerline of interior demising walls and in fact vary from the area that would be determined by using the description and definition of the unit set forth in the declaration (which generally only includes the interior airspace between the perimeter walls and excludes interior structural components). Note that measurements of rooms set forth on this floorplan are generally taken at the greatest points of each given room (as if the room were a perfect rectangle), without regards for any cutouts. Accordingly, the area of the actual room will typically be smaller than the product obtained by multiplying the stated length times width. All dimensions are approximate and may vary with actual construction, and all floor plans and development plans are subject to change.

# 2200 BRICKELL

## TYPE L4/L5

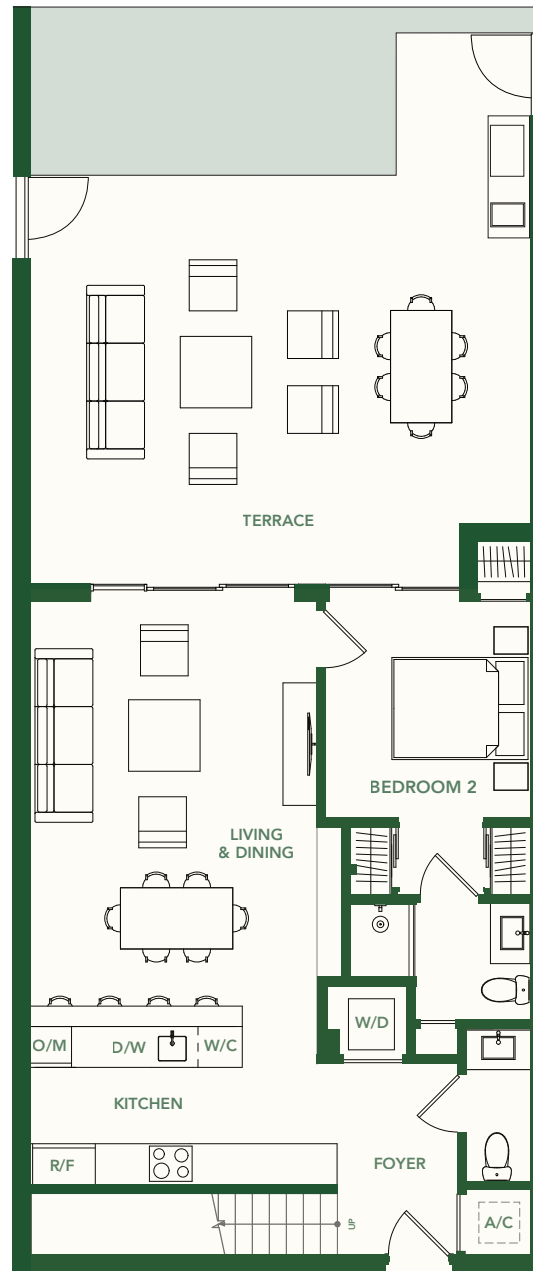
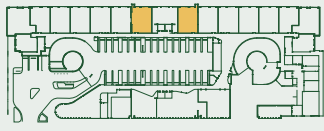
GARDEN VILLAS 108, 110

2 BEDROOMS + OFFICE

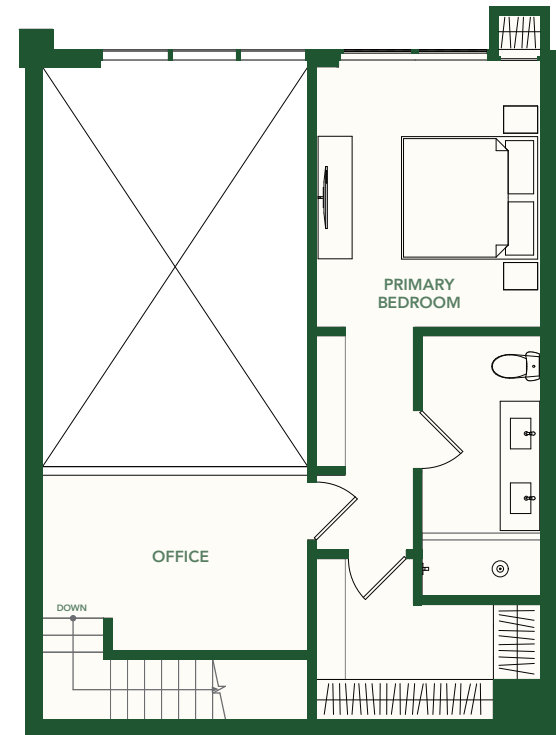
2.5 BATHROOMS

GROUND LEVEL

INTERIOR	1,462 SF / 136 M <sup>2</sup>
TERRACE	708 SF / 66 M <sup>2</sup>
TOTAL	2,170 SF / 202 M <sup>2</sup>



**GROUND LEVEL**  
Interior - 850 SF / 79 M<sup>2</sup>



**SECOND LEVEL**  
Interior - 576 SF / 54 M<sup>2</sup>



These drawings are conceptual only and are for the convenience of reference. They should not be relied upon as representations, express or implied, of the final detail of the residences. Units shown are examples of unit types and may not depict actual units. Stated square footages are ranges for a particular unit type and are measured to the exterior boundaries of the exterior walls and the centerline of interior demising walls and in fact vary from the area that would be determined by using the description and definition of the unit set forth in the declaration (which generally only includes the interior airspace between the perimeter walls and excludes interior structural components). Note that measurements of rooms set forth on this floorplan are generally taken at the greatest points of each given room (as if the room were a perfect rectangle), without regards for any cutouts. Accordingly, the area of the actual room will typically be smaller than the product obtained by multiplying the stated length times width. All dimensions are approximate and may vary with actual construction, and all floor plans and development plans are subject to change.

2200  
BRICKELL

# TYPE M

GARDEN VILLAS 106, 112

2 BEDROOMS + DEN + OFFICE

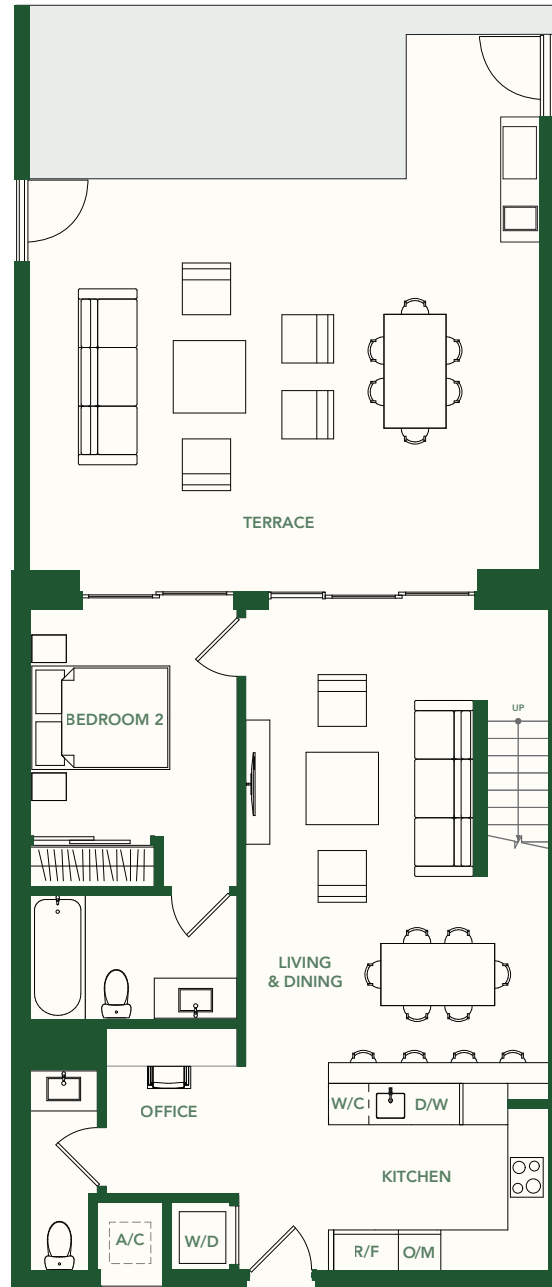
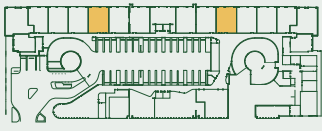
2.5 BATHROOMS

GROUND LEVEL

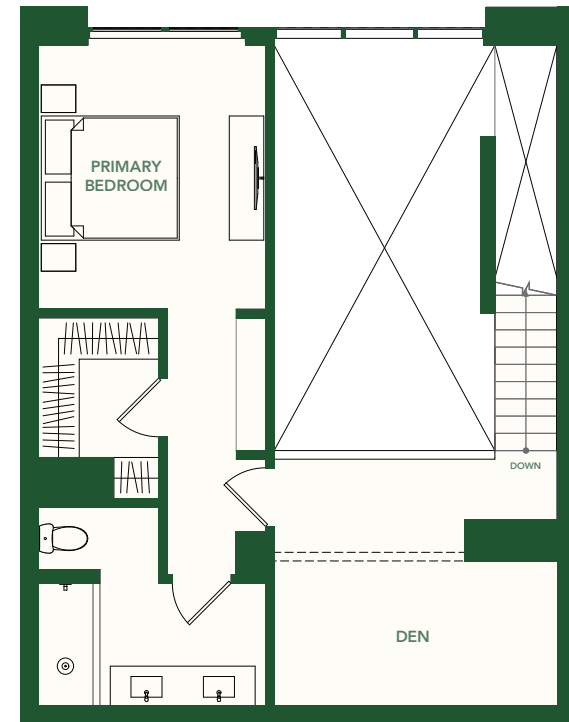
INTERIOR 1,458 SF / 135 M<sup>2</sup>

TERRACE 720 SF / 69 M<sup>2</sup>

TOTAL 2,178 SF / 202 M<sup>2</sup>



**GROUND LEVEL**  
Interior - 873 SF / 81 M<sup>2</sup>



**SECOND LEVEL**  
Interior - 585 SF / 54 M<sup>2</sup>



These drawings are conceptual only and are for the convenience of reference. They should not be relied upon as representations, express or implied, of the final detail of the residences. Units shown are examples of unit types and may not depict actual units. Stated square footages are ranges for a particular unit type and are measured to the exterior boundaries of the exterior walls and the centerline of interior demising walls and in fact vary from the area that would be determined by using the description and definition of the unit set forth in the declaration (which generally only includes the interior airspace between the perimeter walls and excludes interior structural components). Note that measurements of rooms set forth on this floorplan are generally taken at the greatest points of each given room (as if the room were a perfect rectangle), without regards for any cutouts. Accordingly, the area of the actual room will typically be smaller than the product obtained by multiplying the stated length times width. All dimensions are approximate and may vary with actual construction, and all floor plans and development plans are subject to change.

# 2200 BRICKELL

## TYPE N

GARDEN VILLA 109

2 BEDROOMS + OFFICE

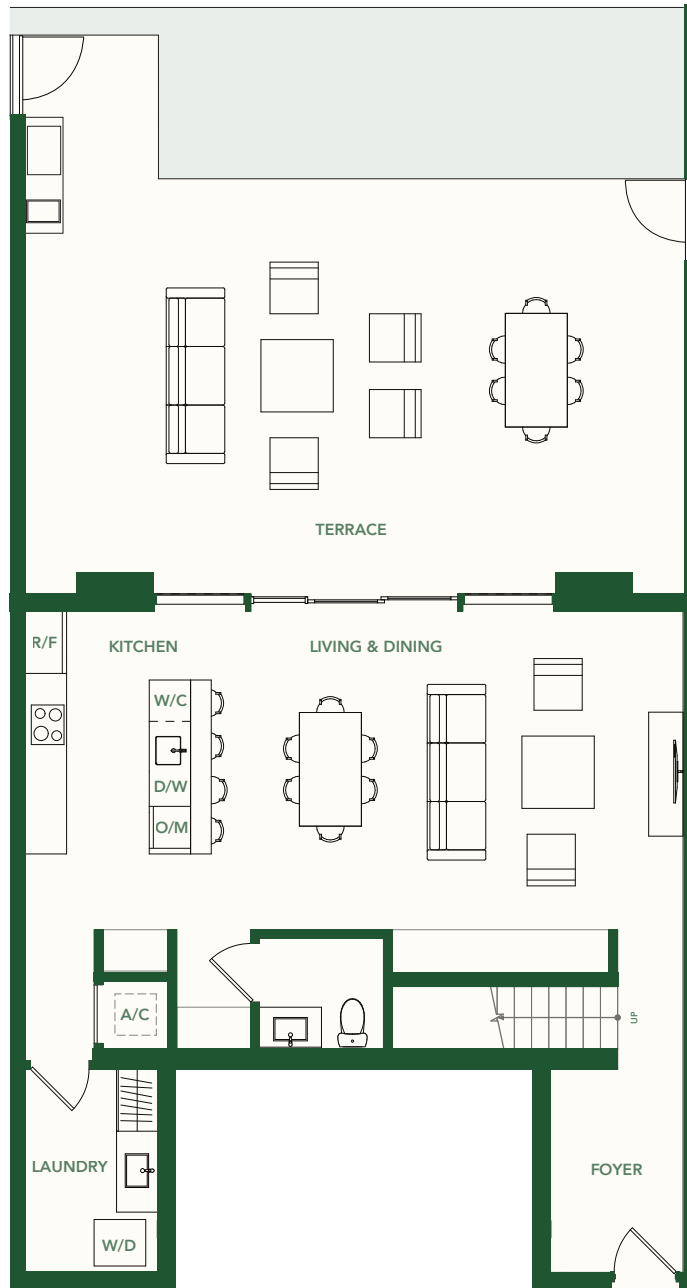
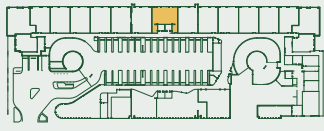
2.5 BATHROOMS

GROUND LEVEL

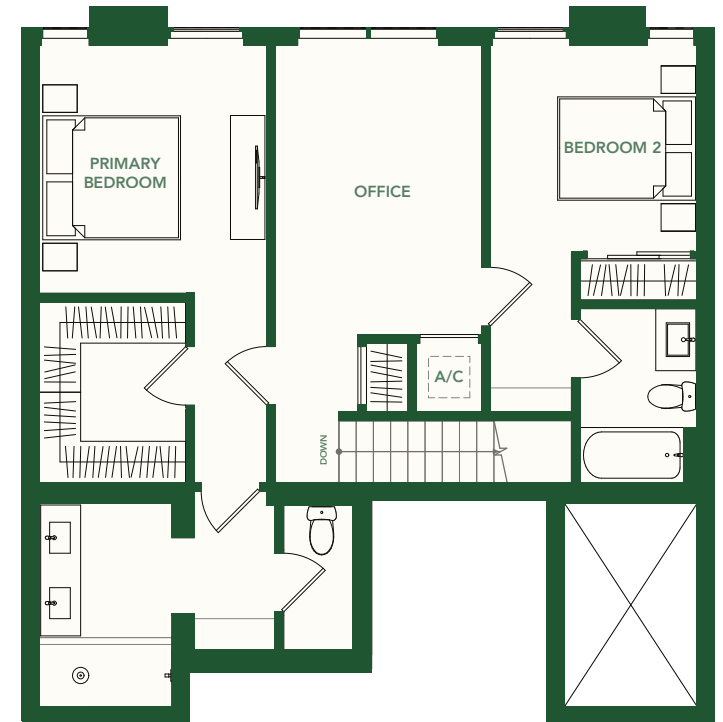
INTERIOR 1,793 SF / 167 M<sup>2</sup>

TERRACE 926 SF / 86 M<sup>2</sup>

TOTAL 2,719 SF / 252 M<sup>2</sup>



**GROUND LEVEL**  
Interior - 899 SF / 84 M<sup>2</sup>



**SECOND LEVEL**  
Interior - 894 SF / 83 M<sup>2</sup>



These drawings are conceptual only and are for the convenience of reference. They should not be relied upon as representations, express or implied, of the final detail of the residences. Units shown are examples of unit types and may not depict actual units. Stated square footages are ranges for a particular unit type and are measured to the exterior boundaries of the exterior walls and the centerline of interior demising walls and in fact vary from the area that would be determined by using the description and definition of the unit set forth in the declaration (which generally only includes the interior airspace between the perimeter walls and excludes interior structural components). Note that measurements of rooms set forth on this floorplan are generally taken at the greatest points of each given room (as if the room were a perfect rectangle), without regards for any cutouts. Accordingly, the area of the actual room will typically be smaller than the product obtained by multiplying the stated length times width. All dimensions are approximate and may vary with actual construction, and all floor plans and development plans are subject to change.

2200  
BRICKELL

# TYPE O

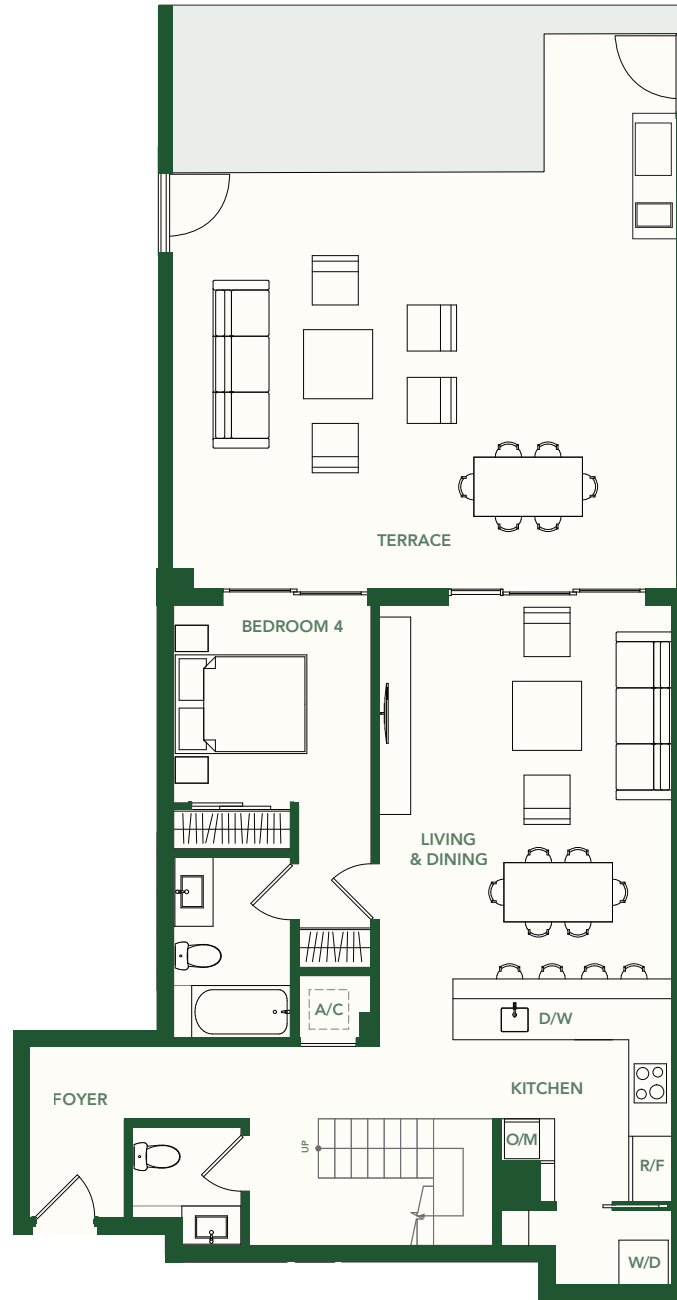
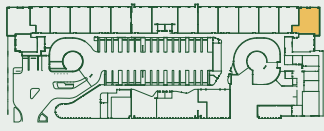
GARDEN VILLA 102

4 BEDROOMS

3.5 BATHROOMS

GROUND LEVEL

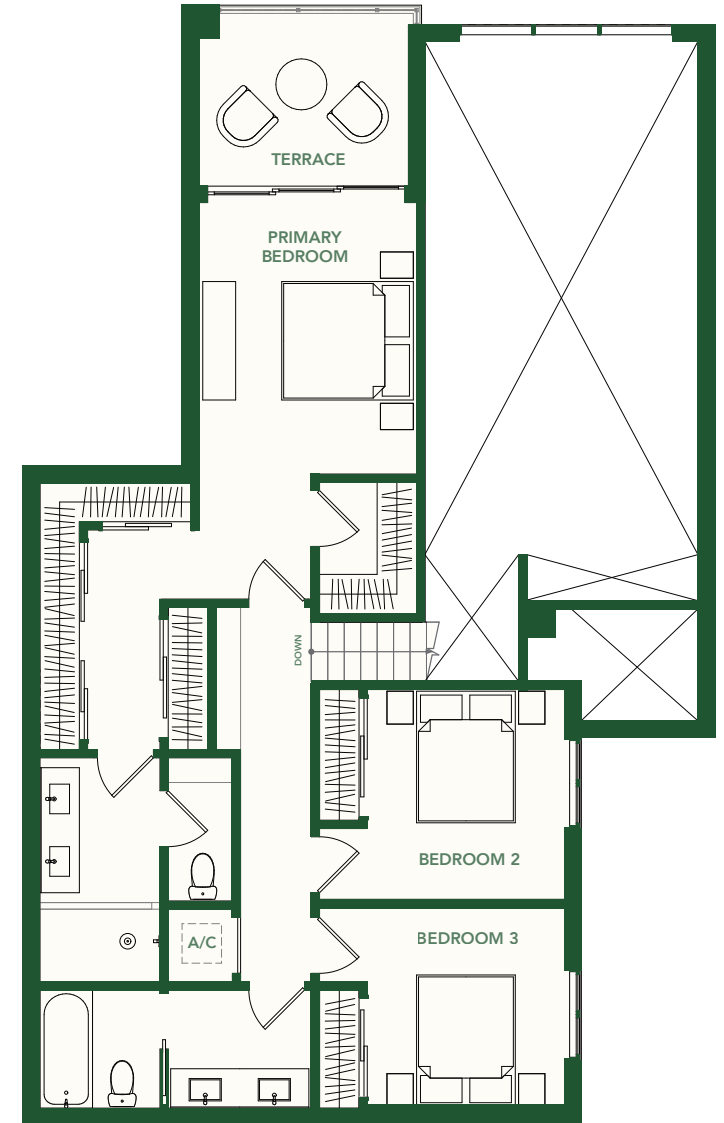
<b>INTERIOR</b>	1,973 SF / 183 M <sup>2</sup>
<b>TERRACE</b>	859 SF / 80 M <sup>2</sup>
<b>TOTAL</b>	2,832 SF / 263 M <sup>2</sup>



## GROUND LEVEL

Interior - 996 SF / 93 M<sup>2</sup>

Terrace - 768 SF / 71 M<sup>2</sup>



## SECOND LEVEL

Interior - 977 SF / 91 M<sup>2</sup>

Terrace - 91 SF / 9 M<sup>2</sup>



These drawings are conceptual only and are for the convenience of reference. They should not be relied upon as representations, express or implied, of the final detail of the residences. Units shown are examples of unit types and may not depict actual units. Stated square footages are ranges for a particular unit type and are measured to the exterior boundaries of the exterior walls and the centerline of interior demising walls and in fact vary from the area that would be determined by using the description and definition of the unit set forth in the declaration (which generally only includes the interior airspace between the perimeter walls and excludes interior structural components). Note that measurements of rooms set forth on this floorplan are generally taken at the greatest points of each given room (as if the room were a perfect rectangle), without regards for any cutouts. Accordingly, the area of the actual room will typically be smaller than the product obtained by multiplying the stated length times width. All dimensions are approximate and may vary with actual construction, and all floor plans and development plans are subject to change.

2200  
BRICKELL

# TYPE P

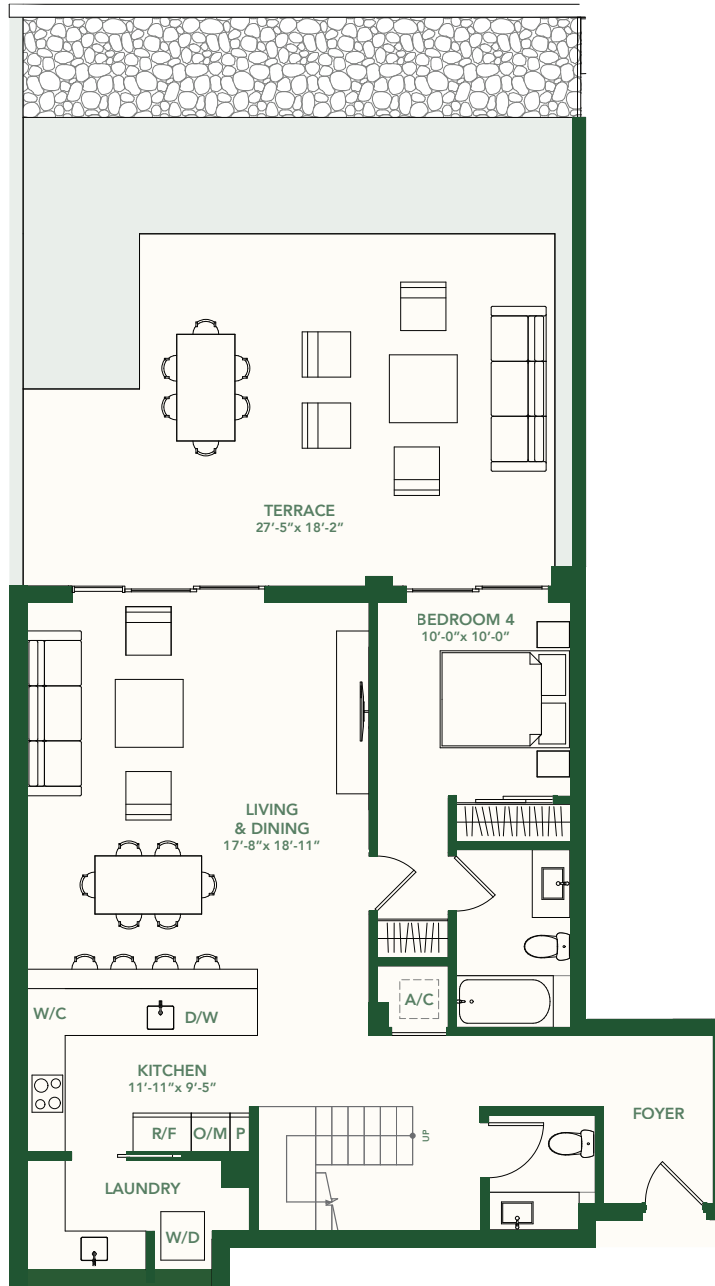
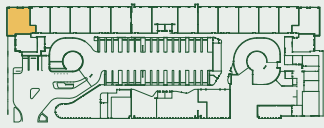
GARDEN VILLA 116

4 BEDROOMS

3.5 BATHROOMS

GROUND LEVEL

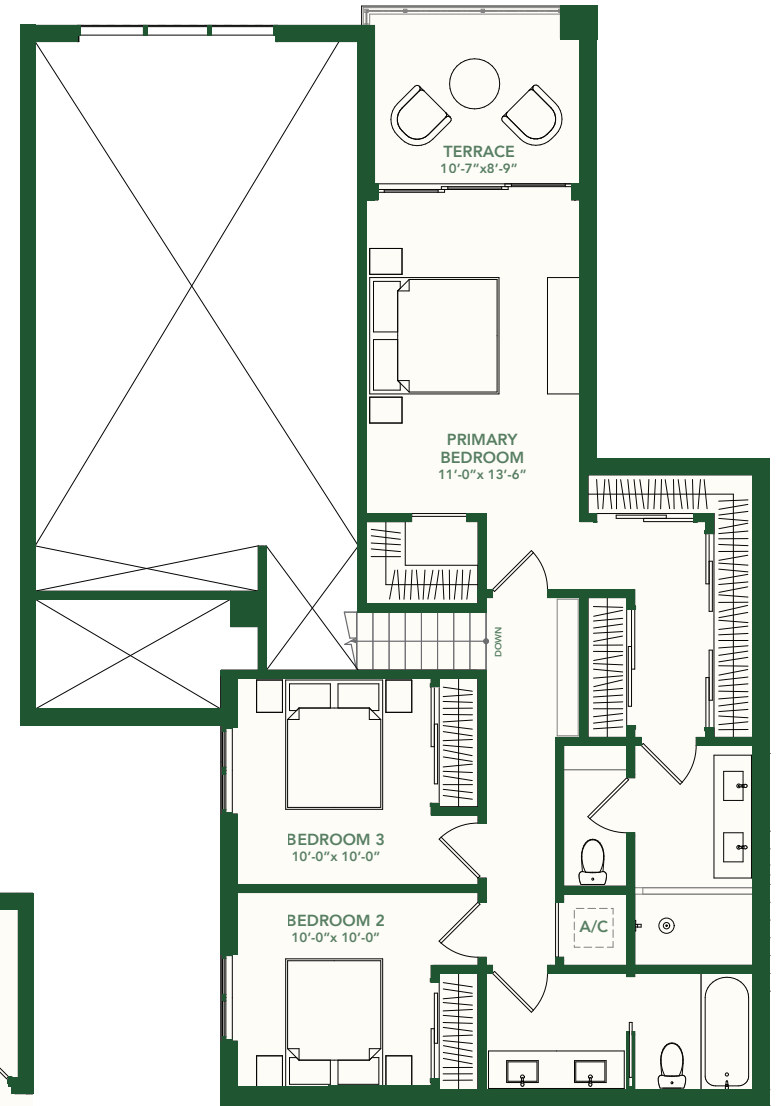
<b>INTERIOR</b>	2,069 SF / 192 M <sup>2</sup>
<b>TERRACE</b>	540 SF / 50 M <sup>2</sup>
<b>TOTAL</b>	2,609 SF / 242 M <sup>2</sup>



## GROUND LEVEL

Interior - 1,086 SF / 101 M<sup>2</sup>

Terrace - 449 SF / 42 M<sup>2</sup>



## SECOND LEVEL

Interior - 983 SF / 91 M<sup>2</sup>

Terrace - 91 SF / 9 M<sup>2</sup>



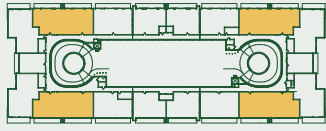
These drawings are conceptual only and are for the convenience of reference. They should not be relied upon as representations, express or implied, of the final detail of the residences. Units shown are examples of unit types and may not depict actual units. Stated square footages are ranges for a particular unit type and are measured to the exterior boundaries of the exterior walls and the centerline of interior demising walls and in fact vary from the area that would be determined by using the description and definition of the unit set forth in the declaration (which generally only includes the interior airspace between the perimeter walls and excludes interior structural components). Note that measurements of rooms set forth on this floorplan are generally taken at the greatest points of each given room (as if the room were a perfect rectangle), without regards for any cutouts. Accordingly, the area of the actual room will typically be smaller than the product obtained by multiplying the stated length times width. All dimensions are approximate and may vary with actual construction, and all floor plans and development plans are subject to change.

## TYPE Q

4 BEDROOM + DEN

3.5 BATHROOMS

**INTERIOR** 2,489 SF / 231 M<sup>2</sup>  
**BALCONY** 443 SF / 41 M<sup>2</sup>  
**TOTAL** 2932 SF / 272 M<sup>2</sup>



These drawings are conceptual only and are for the convenience of reference. They should not be relied upon as representations, express or implied, of the final detail of the residences. Units shown are examples of unit types and may not depict actual units. Stated square footages are ranges for a particular unit type and are measured to the exterior boundaries of the exterior walls and the centerline of interior demising walls and in fact vary from the area that would be determined by using the description and definition of the unit set forth in the declaration (which generally only includes the interior airspace between the perimeter walls and excludes interior structural components). Note that measurements of rooms set forth on this floorplan are generally taken at the greatest points of each given room (as if the room were a perfect rectangle), without regards for any cutouts. Accordingly, the area of the actual room will typically be smaller than the product obtained by multiplying the stated length times width. All dimensions are approximate and may vary with actual construction, and all floor plans and development plans are subject to change.

2200  
BRICKELL

# TYPE R

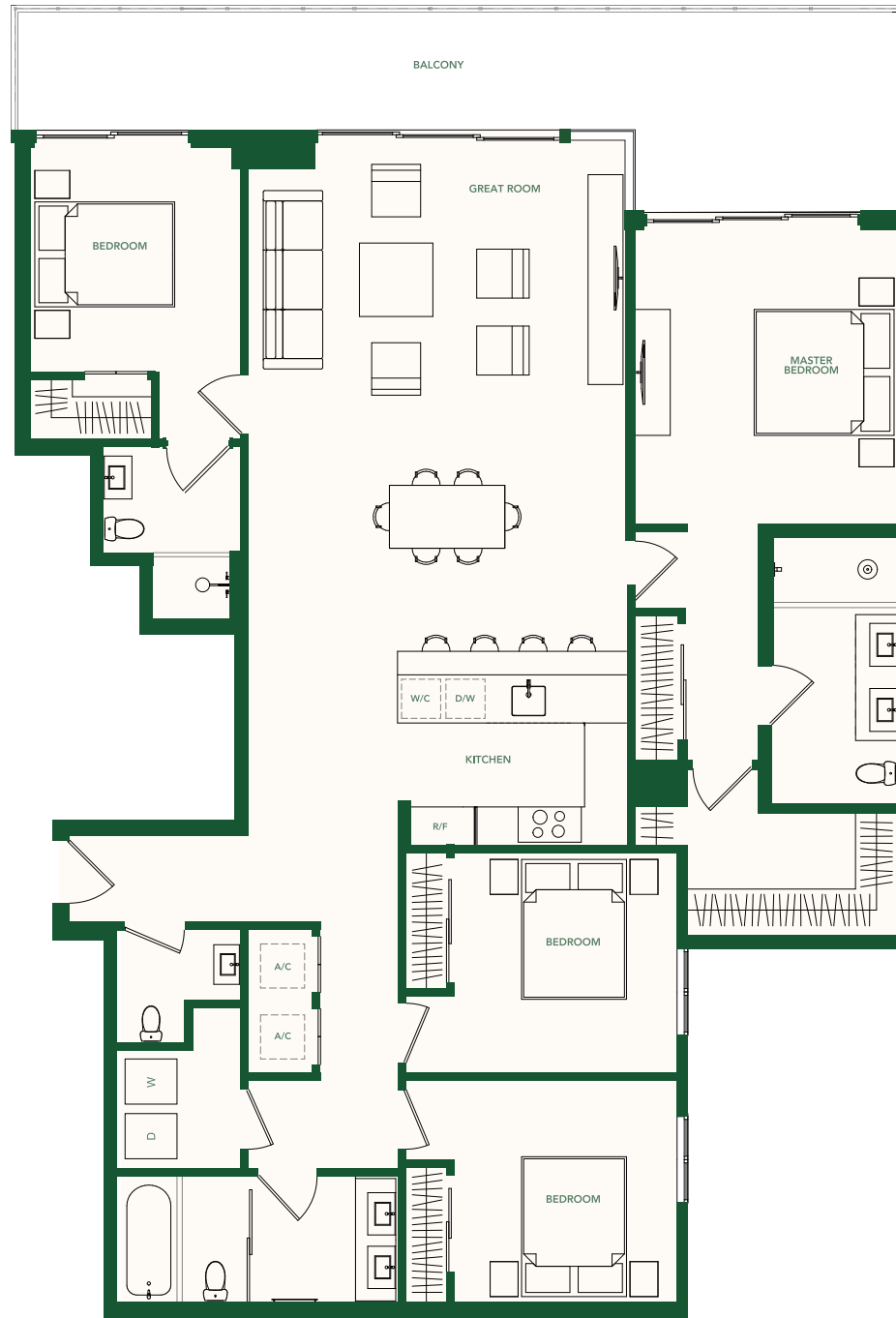
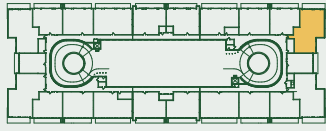
UNIT 07

4 BEDROOMS + DEN

3.5 BATHROOMS

LEVELS 2 - 3

**INTERIOR** 1,950 SF / 181 M<sup>2</sup>  
**BALCONY** 306 SF / 28 M<sup>2</sup>  
**TOTAL** 2,256 SF / 209 M<sup>2</sup>



These drawings are conceptual only and are for the convenience of reference. They should not be relied upon as representations, express or implied, of the final detail of the residences. Units shown are examples of unit types and may not depict actual units. Stated square footages are ranges for a particular unit type and are measured to the exterior boundaries of the exterior walls and the centerline of interior demising walls and in fact vary from the area that would be determined by using the description and definition of the unit set forth in the declaration (which generally only includes the interior airspace between the perimeter walls and excludes interior structural components). Note that measurements of rooms set forth on this floorplan are generally taken at the greatest points of each given room (as if the room were a perfect rectangle), without regards for any cutouts. Accordingly, the area of the actual room will typically be smaller than the product obtained by multiplying the stated length times width. All dimensions are approximate and may vary with actual construction, and all floor plans and development plans are subject to change.



# 2200 BRICKELL

## TYPE S

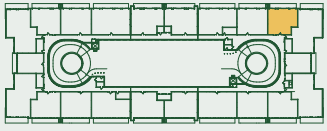
UNIT 08

1 BEDROOM + DEN

1.5 BATHROOMS

LEVELS 2 - 3

INTERIOR	1,038 SF / 96 M <sup>2</sup>
BALCONY	160 SF / 15 M <sup>2</sup>
TOTAL	1,198 SF / 111 M <sup>2</sup>



These drawings are conceptual only and are for the convenience of reference. They should not be relied upon as representations, express or implied, of the final detail of the residences. Units shown are examples of unit types and may not depict actual units. Stated square footages are ranges for a particular unit type and are measured to the exterior boundaries of the exterior walls and the centerline of interior demising walls and in fact vary from the area that would be determined by using the description and definition of the unit set forth in the declaration (which generally only includes the interior airspace between the perimeter walls and excludes interior structural components). Note that measurements of rooms set forth on this floorplan are generally taken at the greatest points of each given room (as if the room were a perfect rectangle), without regard for any cutouts. Accordingly, the area of the actual room will typically be smaller than the product obtained by multiplying the stated length times width. All dimensions are approximate and may vary with actual construction, and all floor plans and development plans are subject to change.